

Quilpie Main Street

Masterplan

Issue :[B]
d: 14.10.21

Prepared by:



Document Control Sheet

Project: **Quilpie Main Street**
Report Title: Masterplan

Authors: **Christoph Pester, Andrew Tomlins, Brett Davidson**
Approved by: **Christoph Pester**

File Location:

Revision	Date	Approved
Rev A - DRAFT	20.08.2021	CP
Rev B	14.10.2021	CP

This document has been prepared solely for the benefit of Quilpie Shire Council and is issued in confidence for the purposes only for which it is supplied. Unauthorised use of this document in any form whatsoever is prohibited. No liability is accepted by CUSP (QLD) Pty Ltd or any employee, contractor, or sub-consultant of this company with respect to its use by any other person. This disclaimer shall apply notwithstanding that the document may be made available to other persons for an application for permission or approval to fulfill a legal obligation.



CONTENTS

- 1.0**
Introduction & Vision.....4
- 2.0**
Context.....5
- 3.0**
Analysis/Land Use6
- 4.0**
Footpath Analysis.....7
- 5.0**
Existing Tree & Lighpost Location.....8
- 6.0**
Issues & Opportunities9
- 7.0**
Vision or Design Drivers..... 15
- 8.0**
Masterplan16
- 9.0**
Streetscape Concept 17
- 10.0**
Median Enlargement Plans 18
- 11.0**
Concept Sketches.....20
- 12.0**
Irrigation Plan.....23
- 13.0**
Character images Streetscape24
- 13.0**
Character images Arid Garden.....25
- 14.0**
Planting Palette.....26



1.0 Introduction & Vision

CUSP was commissioned by Quilpie Shire Council to undertake a masterplan for the main street of Quilpie. Quilpie is located on the Bulloo River and approximately 1000km west of Brisbane.

Quilpie is historically known for the Australian boulder opal. Finds are rare nowadays but the altar of the Roman Catholic Church in town is encrusted in the famous stone and a reminder of the mining history.

The great Western Railway Line from Brisbane finished in Quilpie. Today, the historical railway station and museum are a reminder of this important transport and passenger connection.

Quilpie relies on the great artesian basin for its water which has been bored since the 1920's. It is pumped to the surface at 75c and requires no treatment for use.

The Bulloo river is an isolated drainage system that stretches into NSW. It is a haven for native flora and fauna and avails the community a plethora of recreational activities including fishing, swimming and exploring.

Well entrenched on the 'Grey Nomad' trail, Quilpie attracts visitors from all walks of life. From the panoramic views of the outback from Baldy Top lookout to the tranquility of the Bulloo River Walk, inspiration from nature is abundant to all who experience it.

The intent of the Quilpie Main Street Streetscape Masterplan project is to:

- identify potential issues and opportunities;
- identify improvements through a masterplan
- propose a number of key improvement projects and provide ideation of improvements to a number of sites

- identify opportunities for tree planting and species selection and a general planting palette.

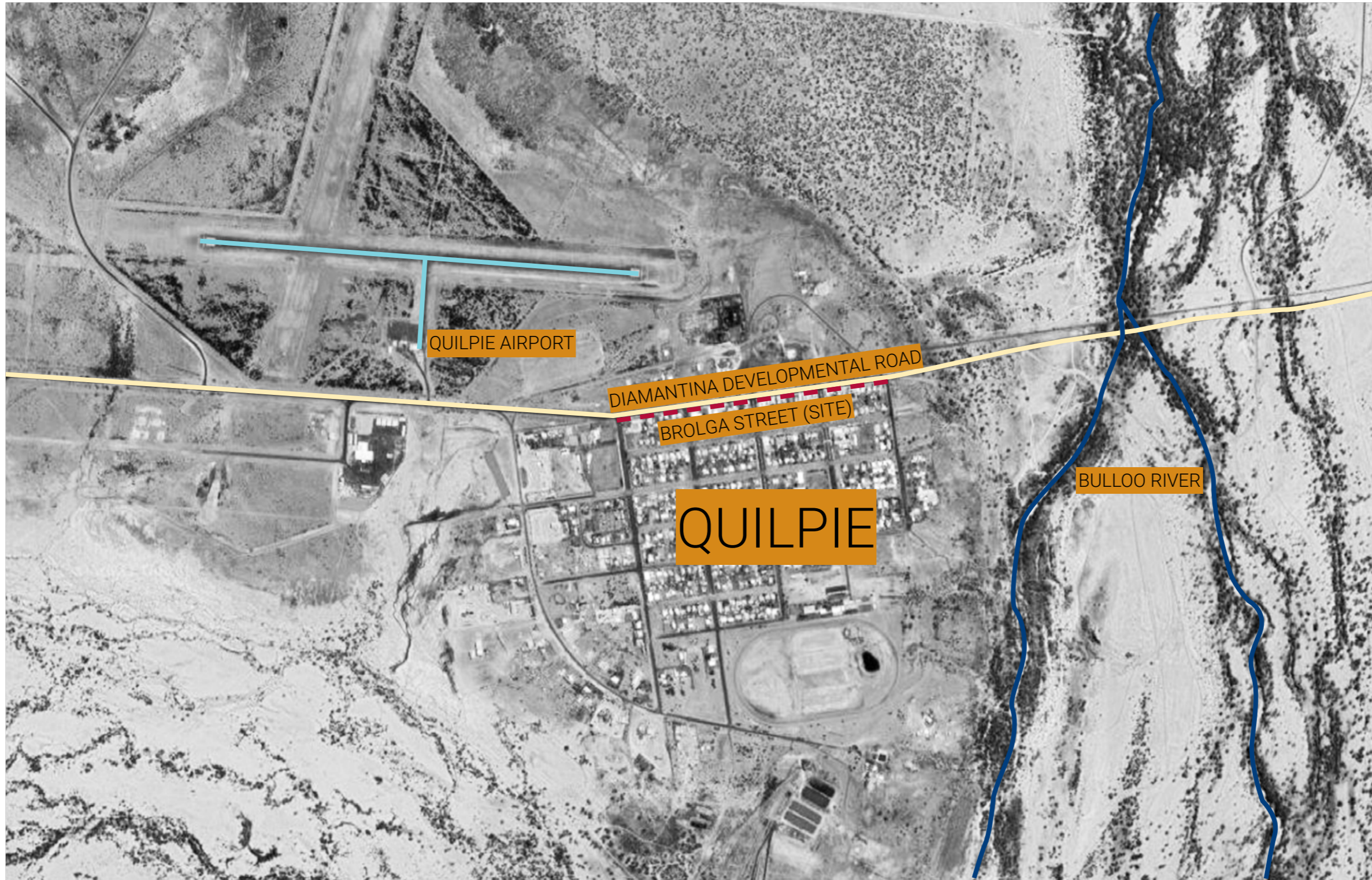
CUSP carried out a site inspection in October 2020 and in consultation with Quilpie Shire Council's key stakeholders, it was identified that the aim is to develop a main street masterplan to tackle key issues and to develop, refine and enhance the visual amenity of Brolga street.

Key issues raised were:

- Lack of shade and trees along the streetscape and sections of town walkway
- Attractiveness of the Memorial Park
- Suggestions for use for the empty block adjacent to the Town Hall
- Beautification and consistent visual theming of the median strip
- Reduce irrigation demand by rationalising planting and turf areas
- Connecting and expanding the 'Mulga Walk' from the airport through to town
- Address the township's overall general image and character to revitalise community spirit/pride and increase visitor perception and appreciation of Quilpie



2.0 Context



3.0 Analysis/Land Use

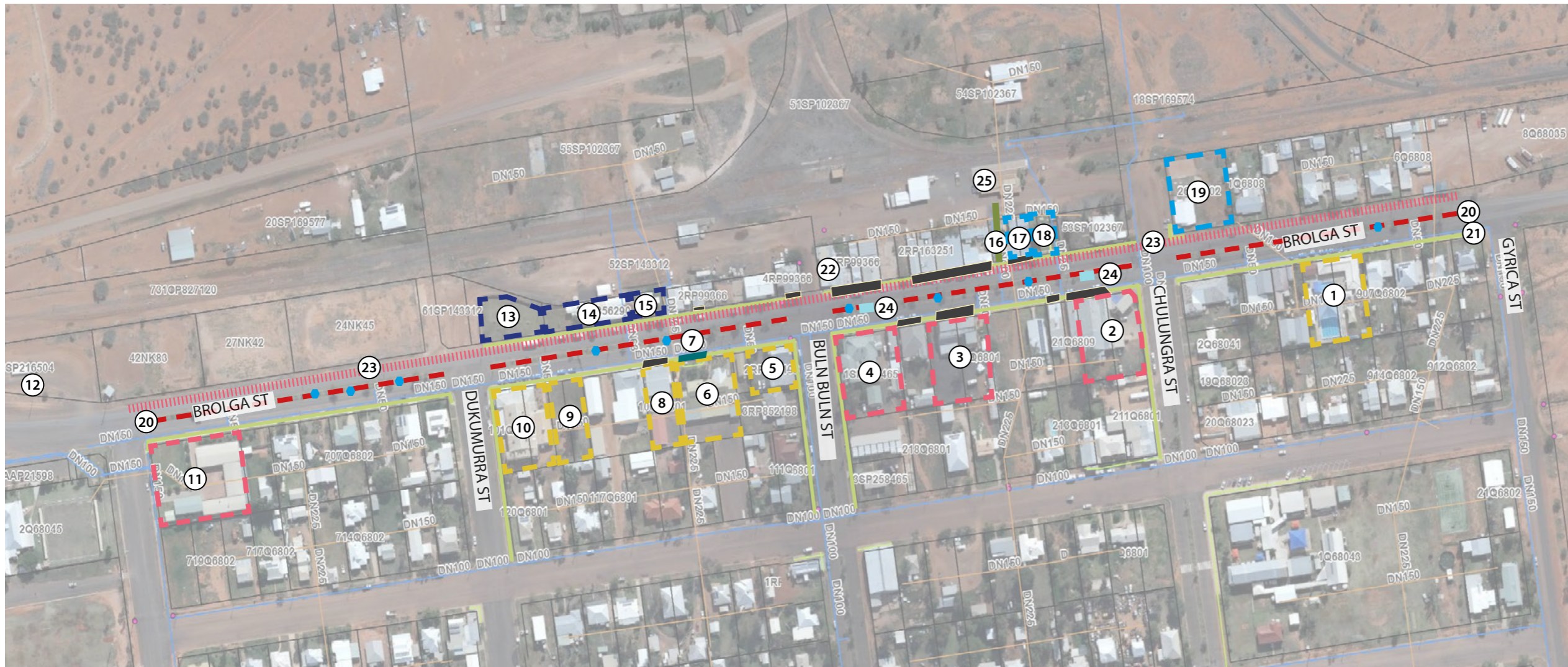
LEGEND

- ① QUILPIE SWIMMING POOL
- ② THE OLD EMPIRE CAFE
- ③ THE QUILPIE BRICK HOTEL
- ④ QUILPIE IMPERIAL HOTEL
- ⑤ AUSTRALIA POST OFFICE
- ⑥ QUILPIE SHIRE COUNCIL
- ⑦ CAR PARKING BAY

- ⑧ QUILPIE SHIRE LIBRARY
- ⑨ OPEN GRASS AREA ADJACENT TO HALL
- ⑩ QUILPIE SHIRE HALL
- ⑪ QUILPIE MOTOR INN
- ⑫ IOR FUEL STATION AND END OF LINE
- ⑬ PUBLIC ART AND PARK SPACE WITH TABLE SETTINGS
- ⑭ QUILPIE VISITOR INFORMATION CENTRE

- ⑮ WINDMILL PARK AND MILITARY HISTORY MUSEUM
- ⑯ VEGETATED LANEWAY
- ⑰ CULTURAL SOCIETY, ART AND CRAFT CENTRE
- ⑱ MEMORIAL PARK WITH WAR MEMORIAL, ART, TABLE SETTINGS AND GARDENS
- ⑲ CWA AND COMMUNITY GARDEN
- ⑳ IRRIGATED MEDIAN STRIP RUNNING FULL LENGTH OF BROLGA STREET WITH LIGHT POLES AND GARDENS/TURF SECTIONS
- ㉑ FOOTPATHS

- ㉒ BAKERY
- ㉓ OVERHEAD POWER
- ㉔ PEDESTRIAN SHELTERS
- ㉕ HISTORIC QUILPIE RAILWAY STATION
- PUBLIC STREET ART DISPLAYED ON THE MEDIAN STRIP THE LENGTH OF BROLGA STREET
- AWNINGS EXTENDING FROM EXISTING BUILDINGS



4.0 Footpath Analysis



- LEGEND**
- BRICK PAVER
 - POURED CONCRETE
 - NO FOOTPATH
 - DECORATIVE NODE
 - - - - - INFORMAL PEDESTRIAN CROSSINGS



5.0 Existing Tree and Lightpost Location



- LEGEND**
- EXISTING TREE
 - * LIGHTPOST



6.0 Issues & Opportunities

Issues

1	Missing pedestrian connection from Mulga walk at airport back into town
2	No footpath along road
3	Median irrigation running central and sprinkling the road
4	Poor edge definition of park only with low shrubs
5	Lack of shade along footpath at park and info centre
6	Lack of logical connection from info centre to rail yard
7	OHG power on northern verge entire 4 blocks and lights in median along entire 4 blocks with OH power (single line)
8	Mix of pavement types - full width concrete instead of brick
9	Pedestrian connection next to art and craft society to old railway station not legible
10	Memorial park appeal - fence, raised brick gardens, plant selection, poor pavement quality, dated furniture and structure
11	Lack of shade in verge from cultural society to intersection and no turf in verge at last block
12	CWA garden fenced off- open up to street for community, community garden looks neglected
13	Poor tree structure in verge - Oleander
14	Lack of planting either end of median
15	Gaps in median tree planting
16	Brolga sculpture in median in annual garden
17	Uplifting of paver's due to expanding roots
18	Shade structure with seating in median appears unsafe

19	Mix of pavement types - full width concrete instead of brick in front of pub and lack of shade
20	Lack of appeal in gardens in front of council chambers and median (annuals), concrete paving instead of brick
21	Lack of shade in front of Elders
22	Small green space adjacent hall has no defined use
23	Newly planted garden lacks of attractiveness
24	No shade along footpath for entire block
25	Oleander and any poor looking specimen in median
26	Brick retainer around end gardens of all median planters looks untidy - remove bricks and enlarge garden bed with perennials
27	Existing grove with Oleander lacks character

Opportunities

1	New link walkway/path to airport/Mulga Walk
2	Link path past end of line carriage
3	New footpath
4	Propose half circle automated sprinklers from edges to achieve full cover
5	Existing callistemons - enhance verge with turf
6	Suggest trees to define park perimeter
7	Plant trees
8	Provide legible link (path, signage)
9	Suggest to use brick for pavement
10	Highlight connection between railway and arts/society with signage or in pavement
11	Remove fence and open up park to street, in ground gardens, rosemary, upgrade paving and structures and furniture

12	Remove fence, improve community garden, orchard, seating, yawning circle etc.
13	Replace existing trees/shrubs with suitable species and fill in gaps
14	Increase length of gardens with perennials
15	Consider changing paint of broлга and expanding garden to a more native perennial palette
16	Increase tree size pit and rectify pavement
17	Consider moving shade structures to verges
18	Opportunity for more artwork in median
19	Suggest to use brick paver's and street trees
20	Plant flowering perennials - and strong theme reflecting the local environment, change concrete to brick paving

21	Provide seating - outdoor cinema
22	Increase density and species selection to garden bed
23	Street trees planted in narrow verge - structural soil
24	Replace existing planting with suitable tree species
25	Make feature of desert/arid garden



Issues

1. Streetscape

1.1. Lack of shade along sections of Brolga street



1.2. No footpath along the road towards the airport



1.3. Mix of pavement types (pavers and concrete)



2. Median Strip

2.1. Shade structures with seating appear unsafe as people need to cross the road to use them



2.2. Irrigation running in centre of median and overspraying onto road



2.3. Brick retainer around end gardens of all median planters looks untidy



2.4. Median strip appears adhoc with multiple treatments and use of annuals



Issues

3. Information Centre and Park

3.1. Poor edge definition of park lined only with low shrubs



3.2. Lack of shade in park



3.3. Lack of connection to railway yard



3.4. Lack of shade along the footpath outside visitor centre



4. Memorial Park

4.1. Lack of roadside appeal



4.2. Fence lacks attractiveness



4.3. Raised brick gardens and plant selection lack appeal



4.4. Dated furniture and structures



I s s u e s

5. CWA and Community Garden

5.1. Appears closed off to the community



5.2. Community garden looks neglected



5.3. Lack of footpath and inappropriate street trees species selection



Opportunities

1. Town Entry

1.1. Link Mulga walk at airport into town



1.2. Connect end of line carriage to pathway extension



2. Median Strip Art

2.1. Opportunity for more artwork



2.2. Possible reflection of opal mining



3. Memorial Park

2.3. Provide uniform planting to medians



3.1. Remove fence and open up park to the street



3.2. Improve garden beds installing flush edges and revising species selection including natives and rosemary to reflect the ANZAC significance



3.3. Upgrade furniture, structures and overall appearance of pavements



Opportunities

4. Art and Craft Society

4.1. Highlight connection through to the railway with improved signage and pavement



5. CWA and Garden

5.1. Remove fence and open up to street frontage



5.2. Improve usability of community garden with shade/shelter, orchard, bush tucker garden and community vegetable garden



6. Quilpie Shire Council Garden

6.1. Plant flowering perennials and change paving from concrete to brick. Update signage



7. Green Space adjacent to Hall

7.1. Provide seating and resting opportunities



7.2. Possible outdoor cinema



7.0 Vision or Design Drivers



LOCAL CHARACTER/OUTBACK CHARM

The Quilpie Shire recognises and acknowledges the traditional owners of the land (Margany country) in which the township of Quilpie now stands. Quilpie's name comes from the margany word for stone curlew or quilpeta. The local aboriginals were noted as talented stockmen and worked on many properties in the area. They understood the land and grazing needs of the stock. Known for its quality of wool and hard working shearers, Quilpie was highly regarded.

In some ways the toughness of the people were a reflection of the harshness of the earth and vegetation in the area. Softened though by the meandering Bulloo river and the sights and sounds of the flora and fauna it attracts.

Quilpie is now home to many talented artists who echo their environment with the materials and colours they use to illustrate the landscape.

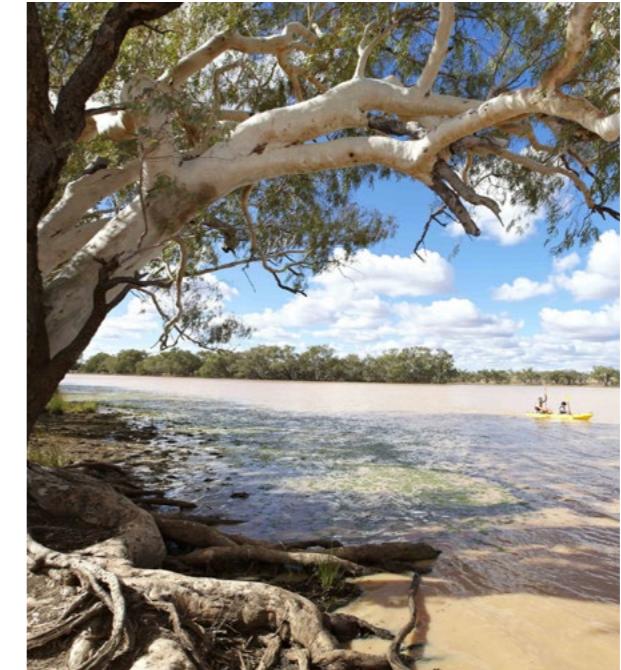


UNIFORM APPEARANCE

One of the true constants in the Quilpie shire is the Red of the outback that runs over the land. The arid red earth landscape is synonymous with the area. The caramel of the bulloo river mirrors the flood plains that feed it during the monsoons.

While relatively flat the earth does give rise to Baldy Top lookout which provides a stunning location for capturing the expansive vistas.

The consistency of the vistas and the colours of the earth can all be inspiration to the motif and concept for Brolga street.



SHADING/STRUCTURE

Like the river gums that stretch out over the Bulloo river, providing shade and respite for whoever needs it, the requirements of the community are stark. During summer, Quilpie's average temperature can get as high as 37c, therefore one of the prerequisites for bringing the community together and connecting locals and tourists alike is shade and comfortability.

The built and natural form can be used to provide sanctuary and place for the connectivity and accessibility to Brolga street.

8.0 Masterplan

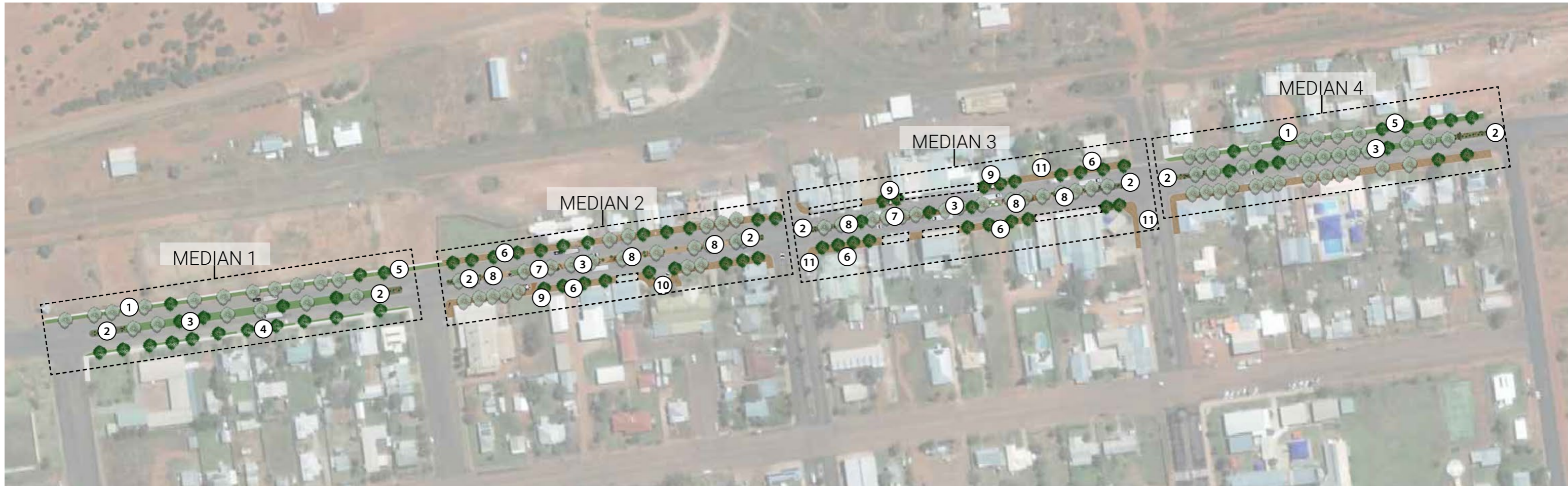


LEGEND



- ① ESTABLISHMENT OF A NEW ARID GARDEN/
BOTANIC GARDEN ON THE WESTERN EDGE
OF TOWN
- ② EXTENSION OF MULGA WALK TO CONNECT
AIRPORT TO TOWN
- ③ REJUVENATION AND IMPROVEMENTS TO
BROLGA STREETScape APPEARANCE
- ④ IMPROVEMENTS TO PARK NEXT TO VISITOR
CENTRE
- ⑤ IMPROVEMENTS AND CHANGE OF USE TO
VACANT LOT NEXT TO TOWN HALL
- ⑥ UPGRADES TO MEMORIAL PARK



9.0 Streetscape Concept



LEGEND

-  EXISTING TREES
-  PROPOSED TREES
- ① NEW CONCRETE FOOTPATH
- ② EXTENDED GARDEN BEDS AT ENDS OF MEDIAN STRIPS WITH NEW CURBING AND PLANTED WITH PERENNIALS
- ③ MORE EFFICIENT IRRIGATION SYSTEM
- ④ NEW STREET TREES PLANTED ON NARROW VERGE WITH STRUCTURAL SOIL
- ⑤ ENHANCE VERGE WITH NEW TURF
- ⑥ NEW TREE PLANTING FOR IMPROVED AESTHETIC AND SHADE FOR PEDESTRIANS
- ⑦ NEW GARDENS IN MEDIAN STRIP TO FILL IN GAPS AND PROVIDE SPACE FOR ARTWORK
- ⑧ FORMAL PEDESTRIAN CROSSINGS WITH FEATURE PAVING
- ⑨ NEW BUMP OUT SEATING AREAS WITH TABLES AND CHAIRS ON VERGES
- ⑩ NEW GARDENS IN FRONT OF COUNCIL BORDERING PARKING BAYS
- ⑪ REPLACE CONCRETE PAVING WITH BRICK PAVING CONTINUED AND USED TO ENHANCE AESTHETICS AND UNIFORMITY

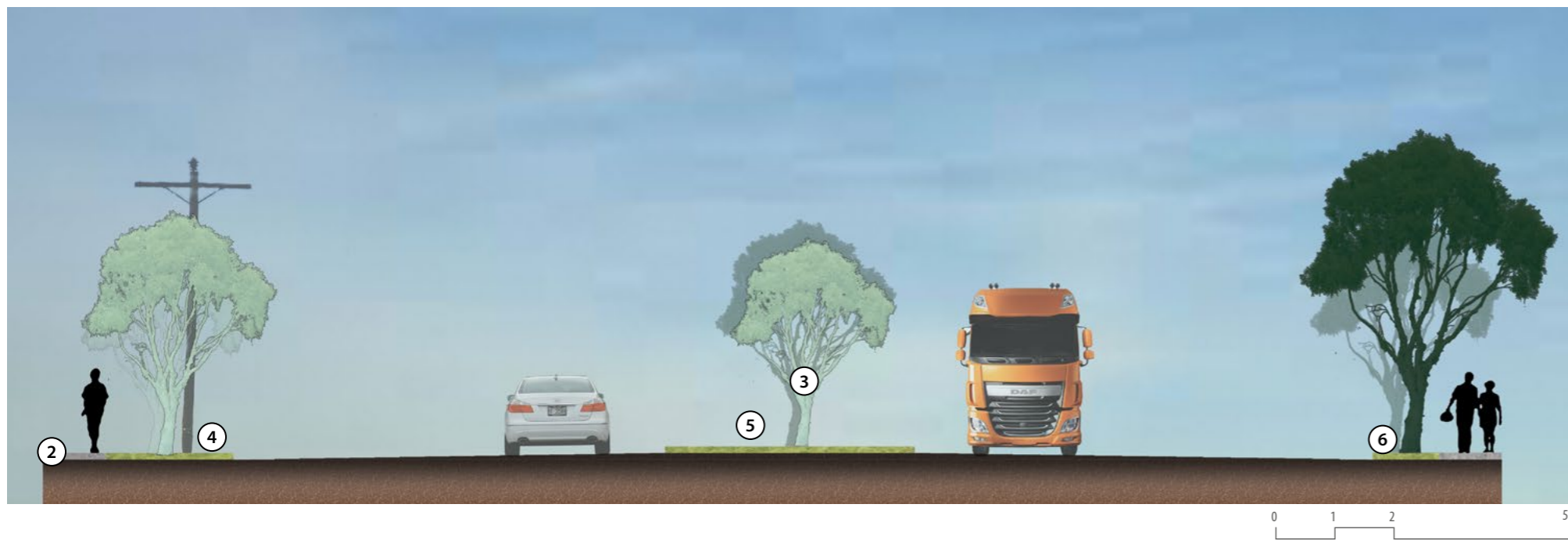


10.0 Median Enlargement Plans









MEDIAN 1



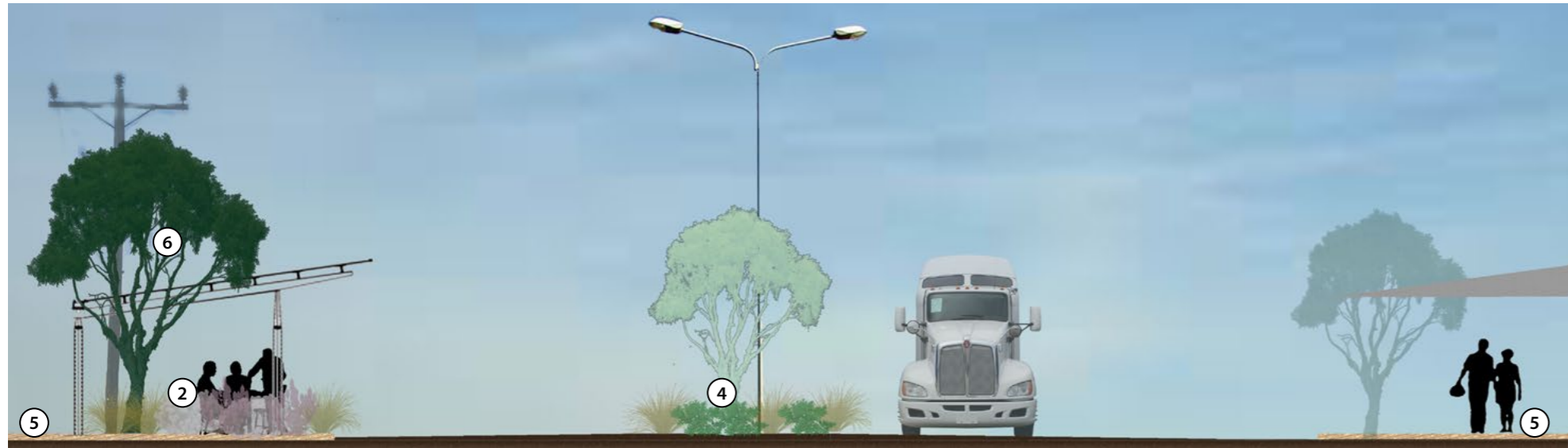
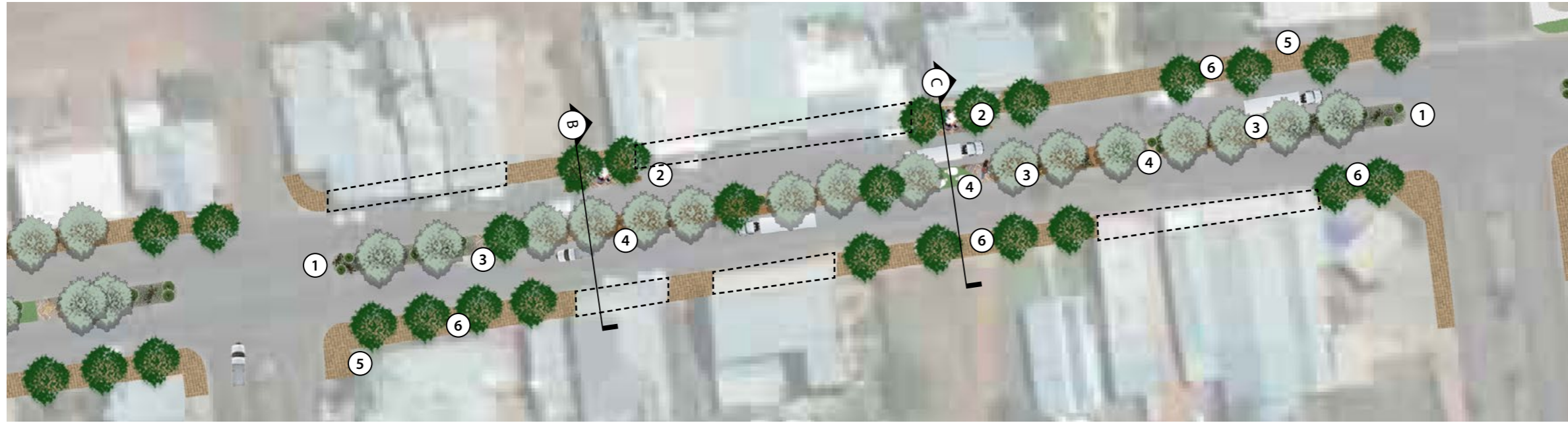
SECTION A



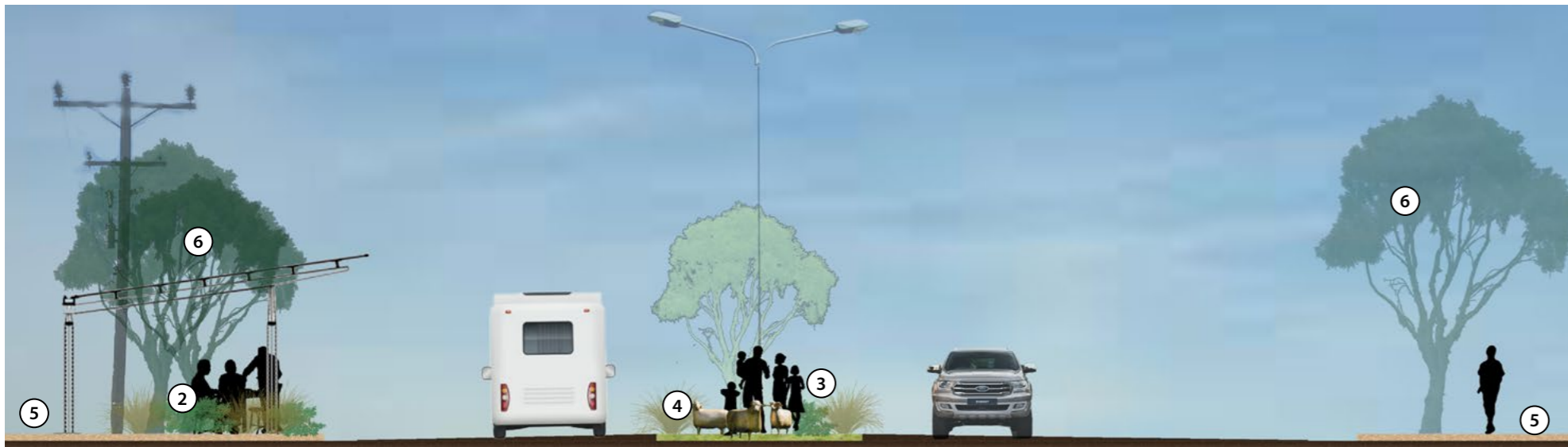
LEGEND

-  EXISTING TREES
-  PROPOSED TREES
-  NEW EXTENDED GARDEN BEDS WITH PERENNIALS AT END OF MEDIAN STRIP AND REPLACE CONCRETE BLOCKS WITH INSITU NEW CURBING
-  NEW CONCRETE FOOTPATH
-  REPLACE EXOTIC SPECIES WITH MORE SUITABLE NATIVE SPECIES
-  ENHANCE VERGE WITH NEW TURF
-  MORE EFFICIENT IRRIGATION SYSTEM TO MEDIAN TURF STRIP
- 

MEDIAN 3





SECTION B



SECTION C

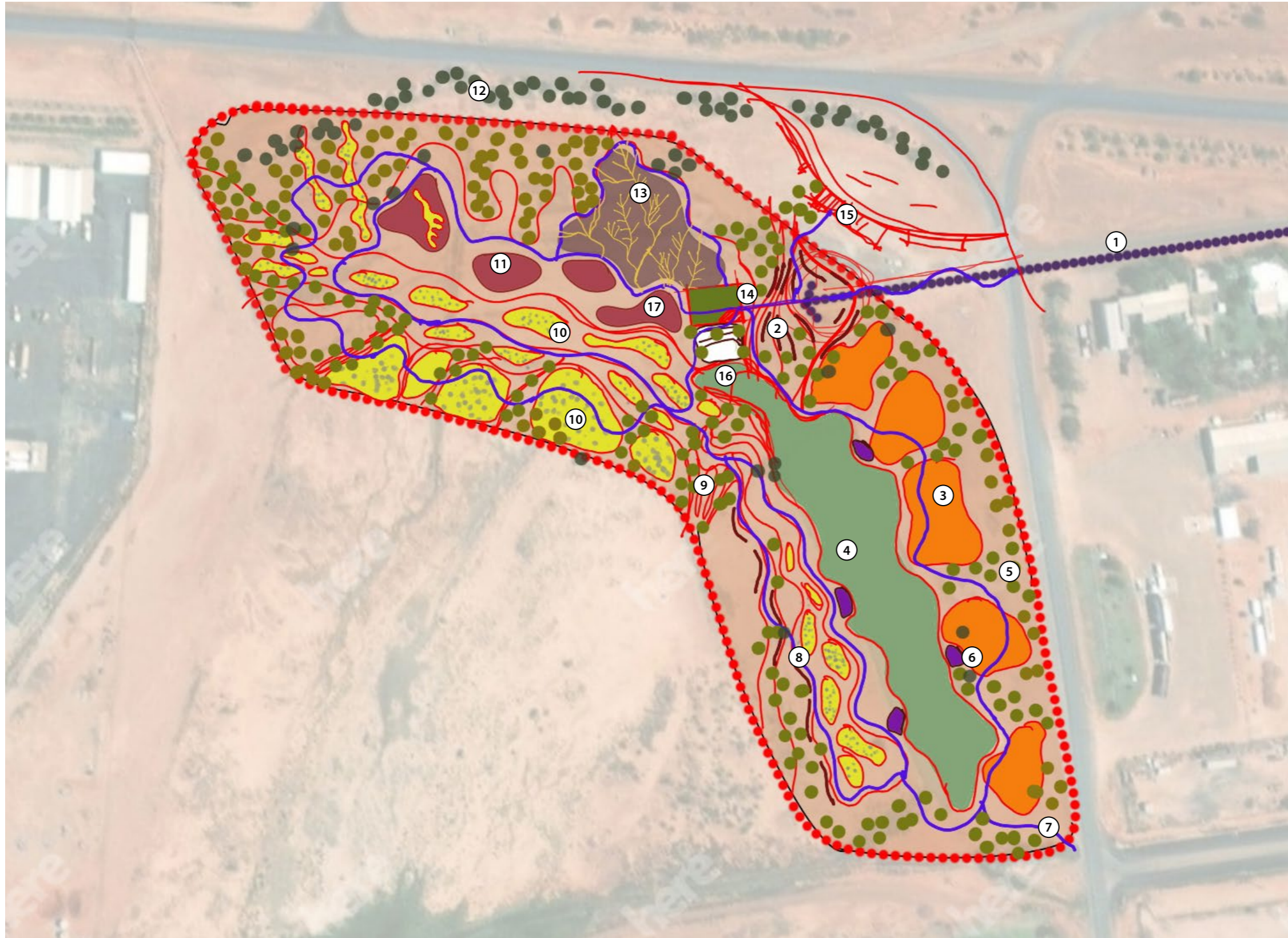


LEGEND

-  EXISTING TREES
-  PROPOSED TREES
- ① NEW EXTENDED GARDEN BEDS WITH PERENNIALS AT END OF MEDIAN STRIP WITH NEW CURBING
- ② NEW SEATING AREAS WITH SHELTER, TABLE AND SEATING ON VERGES
- ③ FORMAL PEDESTRIAN CROSSINGS WITH FEATURE PAVING
- ④ NEW GARDENS IN MEDIAN STRIP WITH PERENNIALS TO FILL IN GAPS AND PROVIDE SPACE FOR ARTWORK
- ⑤ BRICK PAVING CONTINUED AND USED TO ENHANCE AESTHETICS AND UNIFORMITY
- ⑥ NEW TREE PLANTING FOR IMPROVED AESTHETIC AND SHADE FOR PEDESTRIANS

11.0 Concept Sketches

ARID GARDEN



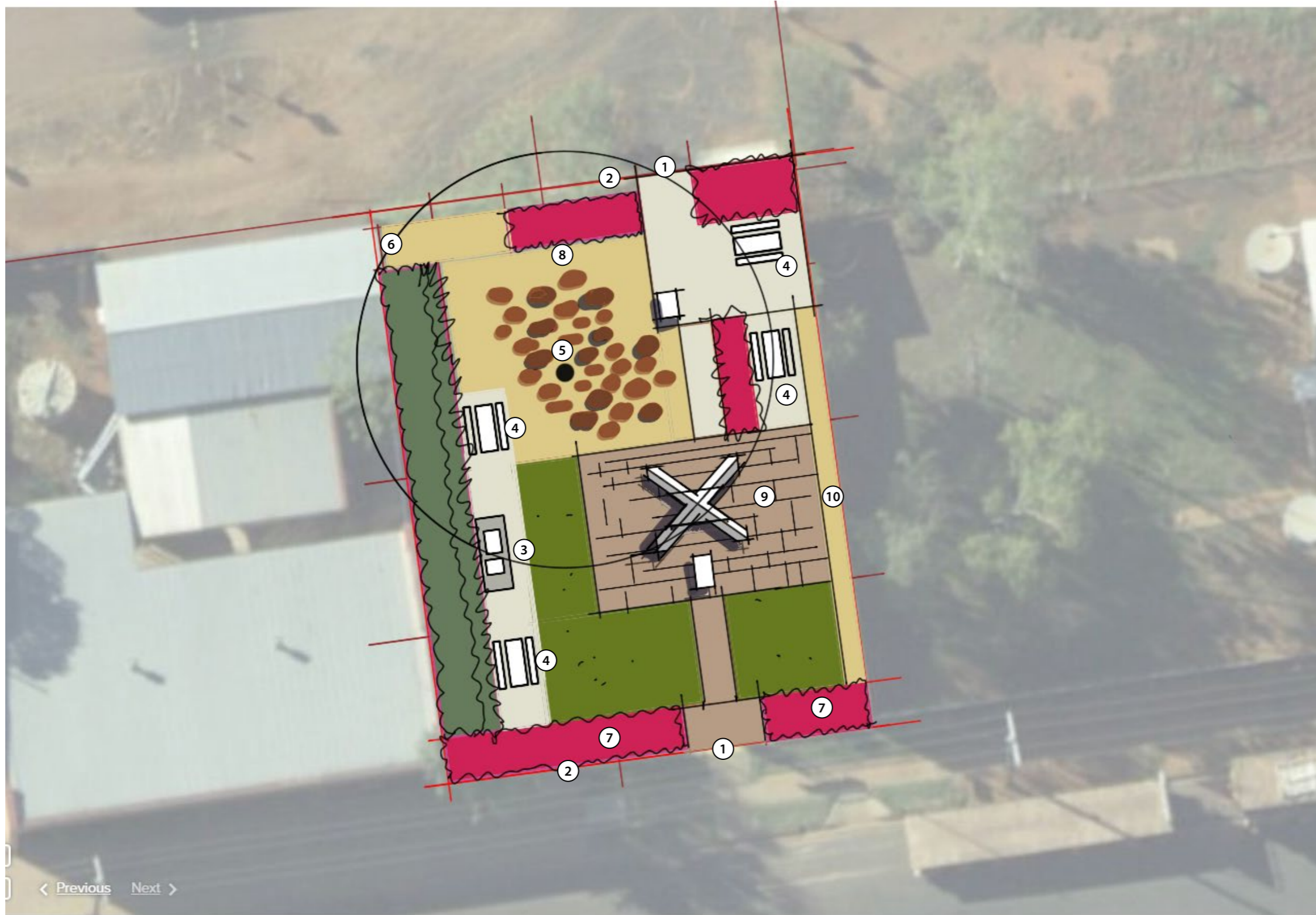
LEGEND

- ① MAIN STREET CONNECTION
- ② ENTRY ZONE
- ③ RECREATION ZONES
- ④ MODIFIED WATER BODY
- ⑤ DRY LAND TREES
- ⑥ LAKE INTERFACE - PICNIC/LOOKOUT
- ⑦ SOUTH EAST TOWN ENTRY
- ⑧ CIRCULATIONS PATHS/TRAILS
- ⑨ WATER TRIB TREES
- ⑩ ARID GARDENS
- ⑪ MIXED USE ZONES
- ⑫ EXISTING TREES
- ⑬ SCULPTURE PARK
- ⑭ CENTRAL LAWN 'QUILPIE TOWN CENTRE'
- ⑮ TRUCK TURNAROUND/ WASH DOWN FACILITY/ CAR PARKING
- ⑯ PERFORMANCE SPACE
- ⑰ NATURE PLAY



11.0 Concept Sketches

MEMORIAL PARK



LEGEND

- ① REFURBISH ENTRY GATE
- ② REMOVE FENCING AND PROVIDE NEW LOW STONE WALL
- ③ RELOCATED BBQ
- ④ RATIONALISE PICNIC TABLES
- ⑤ STONE PAVING/ROCK GARDEN AROUND EXISTING EUCALYPT
- ⑥ ACCESS
- ⑦ FEATURE PLANTING AT GROUND LEVEL (REMOVE BLOCKS)
- ⑧ SEAT
- ⑨ STONE PAVING TO FORMALISE SPACE AROUND MEMORIAL
- ⑩ DECO STRIP AGAINST MURAL

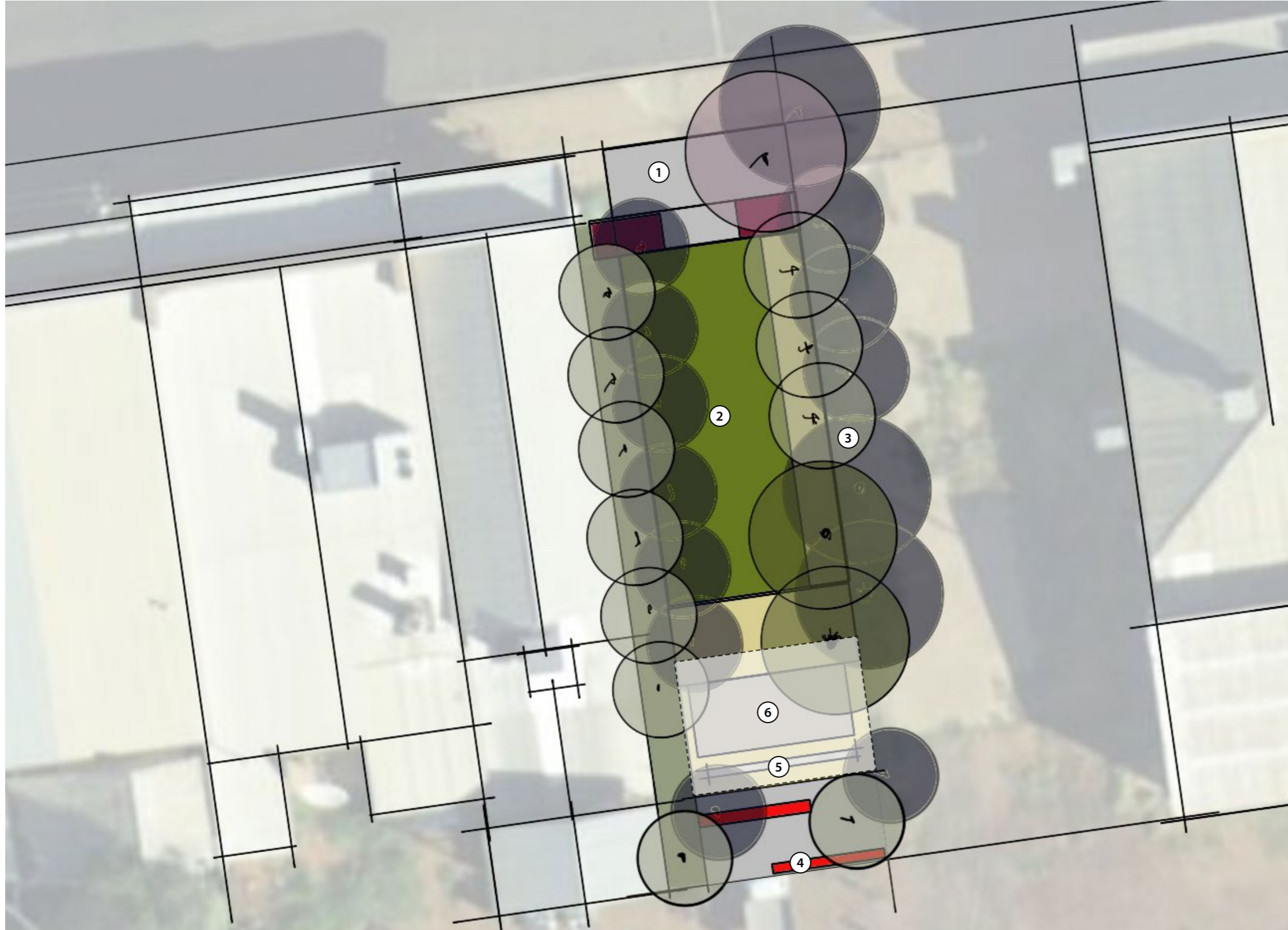
< Previous Next >

0 5 10 25m



11.0 Concept Sketches

OUTDOOR CINEMA



LEGEND

- ① ENTRY PLAZA WITH FEATURE PAVING
- ② MANICURED LAWN
- ③ EXISTING TREES
- ④ BACKGROUND SCREEN PLANTING
- ⑤ SCREEN SUSPENDED UNDER ROOF
- ⑥ STAGE WITH SHADE STRUCTURE

0 5 10 25m



12.0 Irrigation Plan



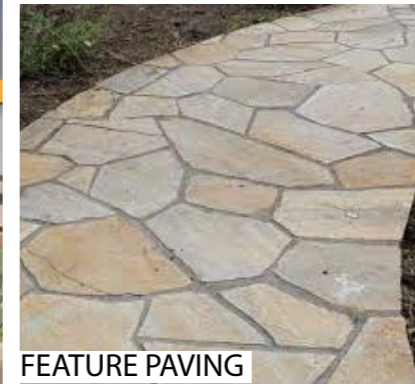
LEGEND

- CE - CONCRETE EDGING TO MEDIAN STRIP
- ① MAIN IRRIGATION LINE RUNNING DOWN ONE SIDE OF MEDIAN STRIP
- ② CONNECTING IRRIGATION LINES TO OPPOSITE SIDE OF MEDIAN STRIP
- ③ NEW SEMI CIRCLE SPRINKLER HEADS FOR IMPROVED COVERAGE AND LESS OVERSPRAY

13.0 Character images Streetscape



MEDIAN STRIP PLANTING



FEATURE PAVING



SHADE STRUCTURES



STREET ART



13.0 Character images Arid Garden



ARID GARDENS



SHELTERS



WATER PLAY



PATHWAYS



SCULPTURES/INTERACTIVE



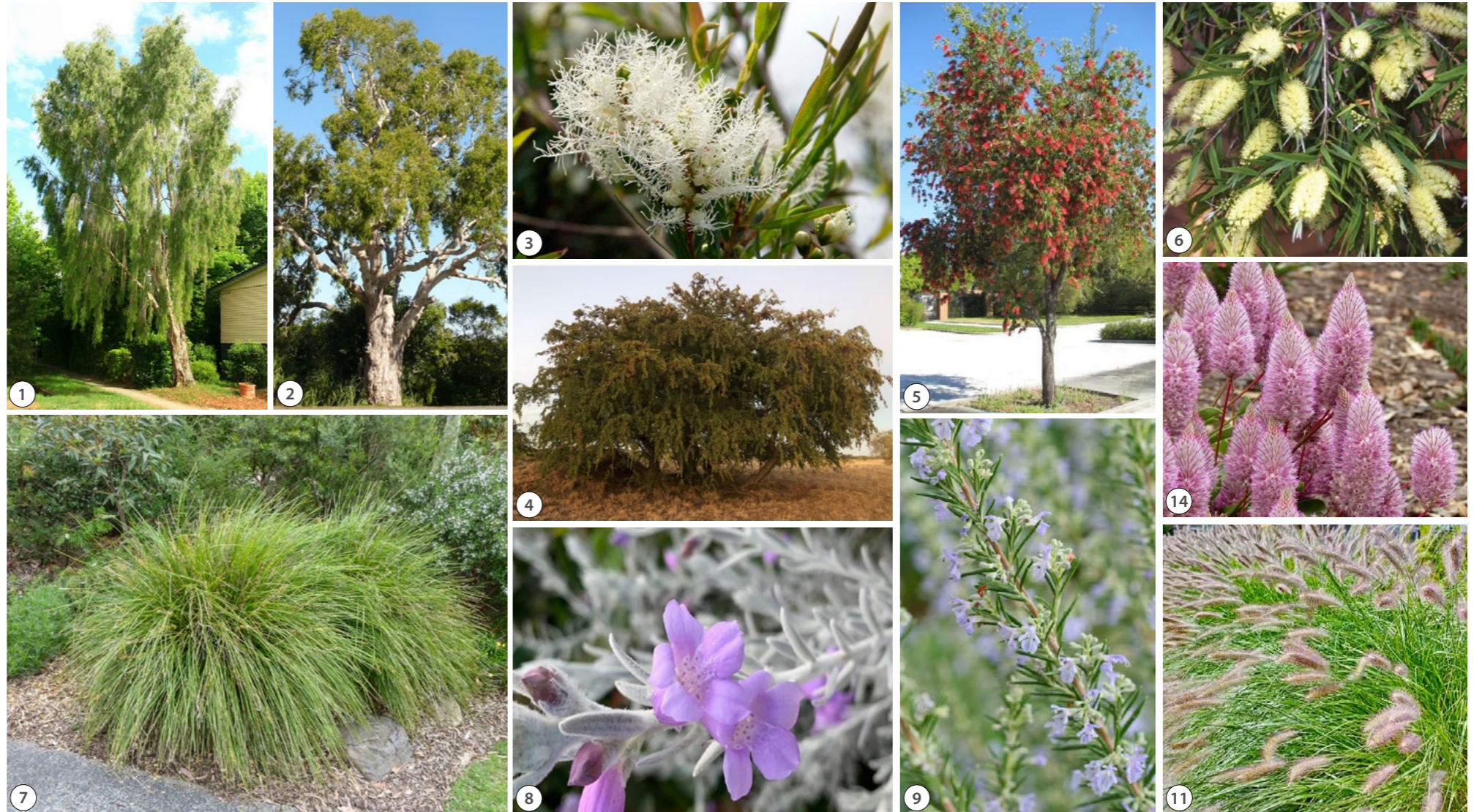
14.0 Planting Palette

STREET TREES UNDER POWERLINES

①	Melaleuca leucadendron	Weeping Paperbark
②	Melaleuca quinquenervia	Broad Leaf Paperbark
③	Melaleuca linariifolia	Snow in Summer
④	Lysiphyllum carronii	Red Bauhinia
⑤	Callistemon viminalis	Wildfire Bottlebrush
⑥	Callistemon salignus	Bottlebrush

STREET GROUNDCOVERS AND SHRUBS

⑦	Lomandra tanika	Lomandra
⑧	Eremophila nivea	Emubush
⑨	Eremophila maculata	Emubush
⑩	Eremophila glabra	Emubush
⑪	Pennisetum alopecuroides	Fountain Grass
⑫	Salvia rosmarinus	Rosemary
⑬	Callistemon 'Little John'	Little John Bottlebrush
⑭	Ptilotus exaltatus	Mulla Mulla



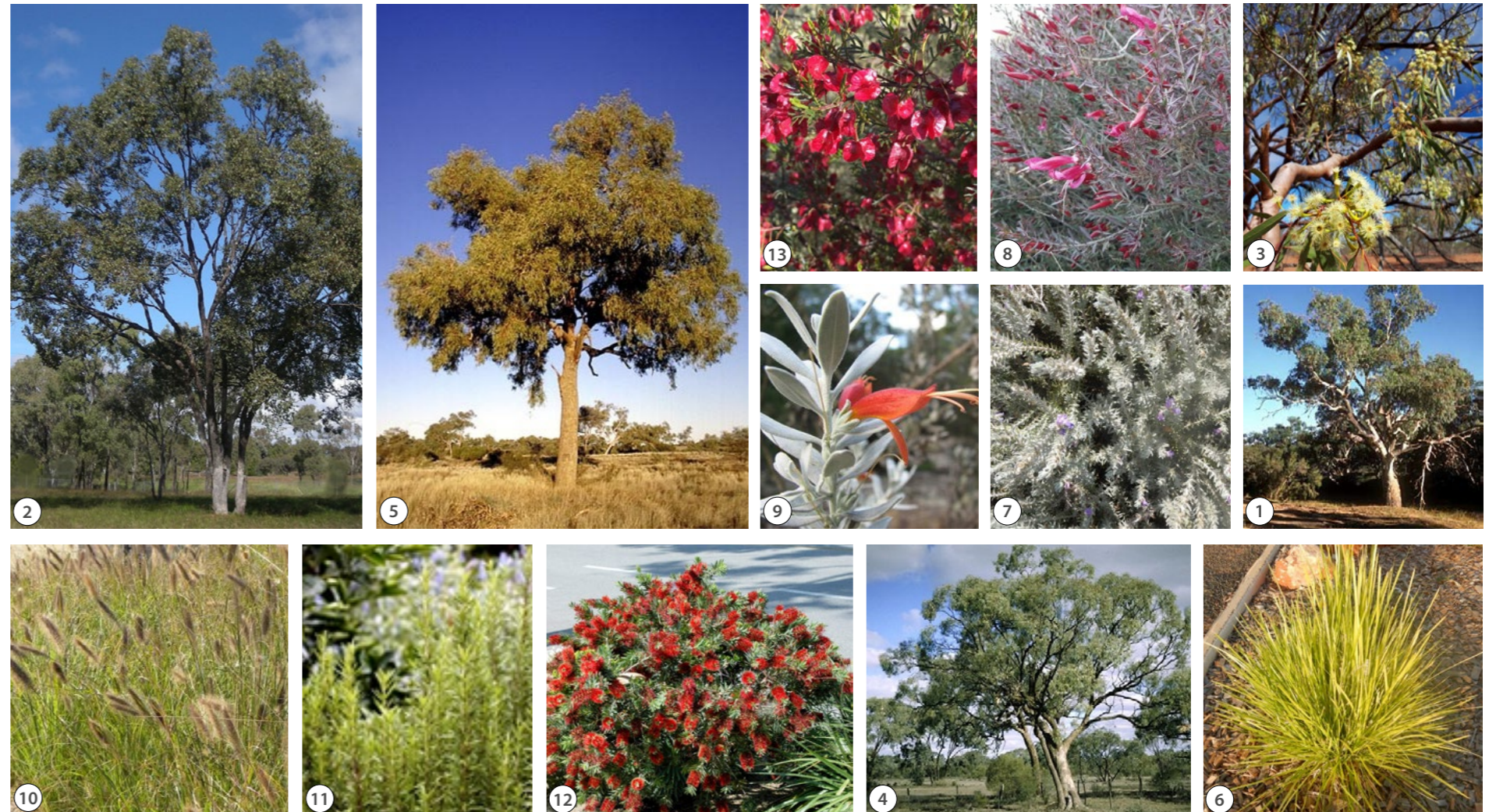
14.0 Planting Palette

TREES WITHIN PUBLIC PARKS AND OPEN SPACE AREAS

①	<i>Eucalyptus camaldulensis</i>	River Red Gum
②	<i>Eucalyptus populnea</i>	Poplar Box
③	<i>Eucalyptus ochrophloia</i>	Yapunyah
④	<i>Eucalyptus largiflorens</i>	Black Box
⑤	<i>Corymbia terminalis</i>	Desert Bloodwood

GROUNDCOVERS AND SHRUBS

⑥	<i>Lomandra tanika</i>	Lomandra
⑦	<i>Eremophila nivea</i>	Emubush
⑧	<i>Eremophila maculata</i>	Emubush
⑨	<i>Eremophila glabra</i>	Emubush
⑩	<i>Pennisetum alopecuroides</i>	Fountain Grass
⑪	<i>Salvia rosmarinus</i>	Rosemary
⑫	<i>Callistemon 'Little John'</i>	Little John Bottlebrush
⑬	<i>Dodonaea sinuolata</i>	Feathery Hop Bush





awsp