



OPERATIONAL STATUS REPORT AGENDA

Friday 10 July 2020
commencing at 9:30am
Quilpie Shire Council Boardroom
50 Brolga Street Quilpie

Ordinary Meeting of Council

3 July 2020

The Mayor and Council Members
Quilpie Shire Council
QUILPIE QLD 4480

Dear Members

Notice is hereby given that a Pre Meeting Briefing will be held at the Council Boardroom, on Friday, 10 July 2020, commencing at **8:30am**.

Notice is also hereby given that an Ordinary Meeting of the Quilpie Shire Council will be held at the Council Chambers, on Friday, 10 July 2020, commencing following the special budget meeting at **9:30am**.

Please find attached for your information, Quilpie Shire Council Operational Status Reports.

Yours faithfully

Dave Burges
Chief Executive Officer





OPERATIONAL STATUS REPORT

AGENDA

Friday 10 July 2020
Quilpie Shire Council Boardroom

TABLE OF CONTENTS

1	ENGINEERING SERVICES	
1.1	(07/20) – ENGINEERING SERVICES.....	1
1.2	(07/20) – WORKSHOP SUPERVISOR OPERATIONAL STATUS REPORT.....	4
1.3	(07/20) – WATER AND SEWERAGE OPERATIONAL STATUS REPORT.....	7
2	CORPORATE AND COMMUNITY SERVICES	
2.1	(07/20) – DIRECTOR OF CORPORATE AND COMMUNITY SERVICES OPERATIONAL STATUS REPORT	10
2.2	(07/20) – PEST AND LIVESTOCK MANAGEMENT COORDINATOR OPERATIONAL STATUS REPORT	12
2.3	(07/20) – RURAL LANDS OFFICER OPERATIONAL STATUS REPORT	14
2.4	(07/20) – HEALTH PROMOTIONS OFFICER OPERATIONAL STATUS REPORT	16
2.5	(07/20) – LIBRARIAN OPERATIONAL STATUS REPORT	18
2.6	(07/20) – NDIS COORDINATOR’S STATUS REPORT	20
3	FINANCE	
3.1	(07/20) – MANAGER OF FINANCIAL SERVICES OPERATIONAL STATUS REPORT	21
4	GOVERNANCE	
4.1	(07/20) – CHIEF EXECUTIVE OFFICER STATUS REPORT.....	28
4.2	(07/20) – GOVERNANCE AND COMMUNICATIONS OFFICER OPERATIONAL STATUS REPORT	32
4.3	(07/20) – TOURISM DEVELOPMENT OFFICER OPERATIONAL STATUS REPORT	36
4.4	(07/20) – WORKPLACE HEALTH AND SAFETY OFFICER OPERATIONAL STATUS REPORT.....	39



Operational Status Report

Engineering Services

1 ENGINEERING SERVICES

1.1 (07/20) – Engineering Services

Author: Director of Engineering Services, Mr. Peter See

IX: 197285

ROADS

RMPC

All works were completed for the 2019-2020 contract. This included an additional \$200,000 for grading on the Adavale-Blackall Road (7103).

The new contract has been signed and is underway.

Main Roads TIDS

The final section of works on the Quilpie-Adavale Red Road (7101) were sealed on the 30th June and 1st of July 2020. The road now is currently sealed from chainage 46-51km through to Adavale (chainage 85km). Works have now commenced on the next section from 46km to 51km which will be completed by October 2020.

Flood Damage Repairs

Works are continuing on the repairs arising from the 2019 and 2020 flood events. Most works from the 2019 are near complete.

Contractors are working on Pinkenetta Road (36), Keeroongooloo Road (71) and Ray Road (30). Council staff are working on Mount Howitt Road (34). The attachment shows maps of works completed for both flood events.

Roads to Recovery

Four crests on Coonaberry Creek Road (35) were widened and sealed to improve road safety. This also includes a short section of road between two crests.

Approximately 30 floodways on Trinidad Road (28) have had concrete edges installed to improve flood resilience.

All Roads to Recovery funding including the increased allocation has been expanded.

COUNCIL BUILDINGS AND FACILITIES

The Council Visitor Information Centre and houses at 57 Jabiru St and 34 Kookaburra St have been repainted. Works are also scheduled for the Quilpie Library.

The building at 62 Jabiru St has been demolished.

The new bowser and Datafuel installation at Quilpie Depot is complete.

WASTE

A new waste cell has been constructed at the Quilpie Waste Facility.

The removal and shredding of 150 tonnes of tyres was due to occur at the end of June.

Initial planning is underway for the bin compound to be built in 2020-2021.

WATER

The new bore installation is essentially complete. Council staff now will connect the head works and connect to the network.

TOWN SERVICES

Bicentennial Park irrigation has been connected to the cold water irrigation line. The old concrete cooling tank is to be removed.

Trees have been planted in front of IOR Fuel in Quilpie.

Works are commencing on the Brolga St traffic island commencing near the Quilpie Motor Inn.

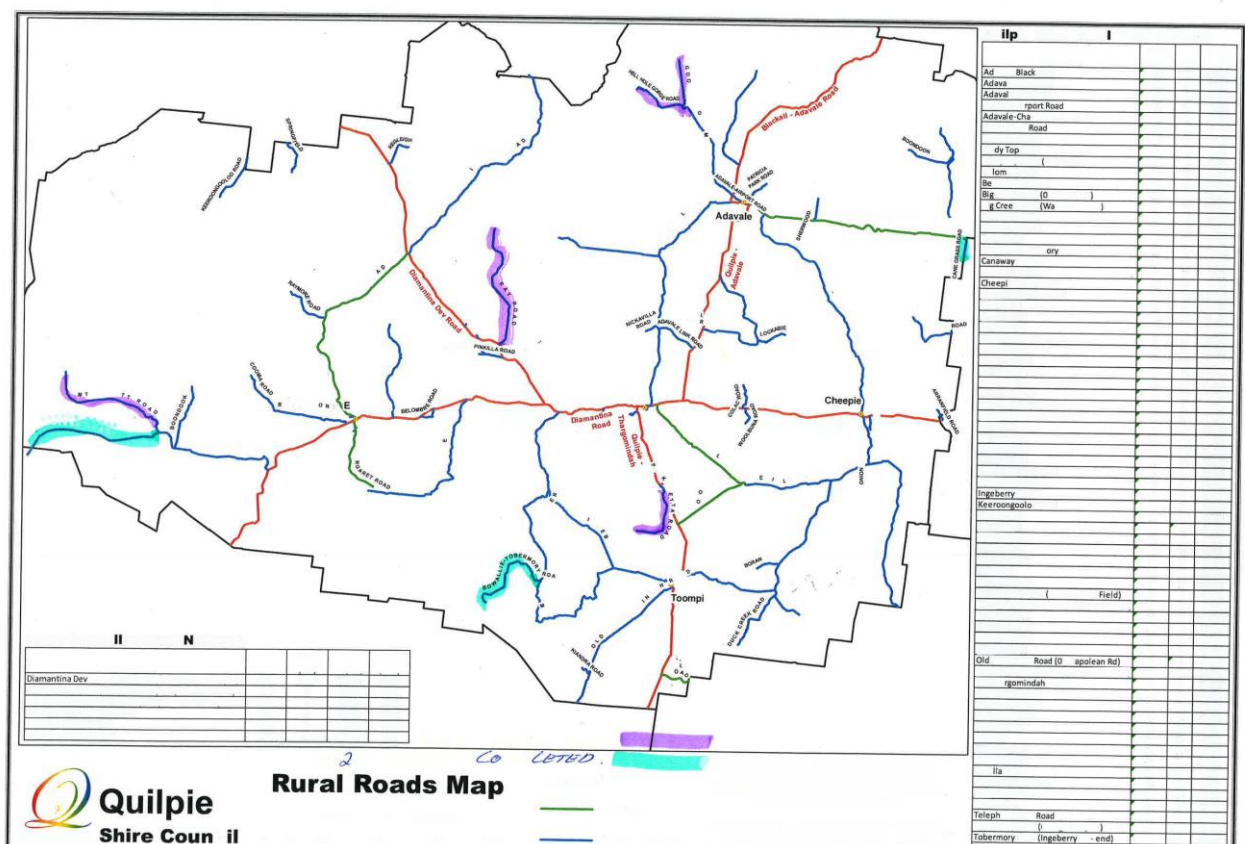
A clean up of all Council properties in Eromanga will occur in July 2020.

ATTACHMENTS:

Attachment One: 2019 Works Completed

Attachment Two: 2020 Works Completed/ 2020 Works Busy

ATTACHMENT ONE



Operational Status Report

Workshop

1.2 (07/20) – Workshop Supervisor Operational Status Report

Author: Jeremy Grimm

IX 197326

GENERAL

Maintenance & Servicing

- 104 remover pad foot drum and rebuild
- 111 water pump and bucket pins bushing
- 127 service 250hr carried out by Komatsu
- 3002 service 1000hr carried out by Komatsu
- 134 replacing drum hydraulic hoses
- 92 street sweeper Hyd oil leaks
- 85 new front windscreen 10,000km service
- 4403 pump seized a crank shaft, so rebuilding engine
- 220 trailer brake reline and track rod bushes replacement
- Updating all assets list and getting all data of current plant that council have
- 50 truck has returned from Brown & Hurley we had to rebuild the gearbox and put new bearings in the front diff
- 3002 side shift ram seal failed replaced ram
- 3001 serviced 250hr
- 2202 brakes staying on blocked exhaust valve
- 52 Dolly refurbishment new lights and mud guards etc.
- 2003 black trucks came out again and replaced the DPF sensors and waste gate under Warranty
- #3402 Loader was found to have a pin hole in engine block causing coolant to leak out. I have consulted with Komatsu and they have agreed to replace engine under warranty. The new engine will be here near the end of September. A 2000hr service was carried out and the front diff had a very high metal content in it. The front drive shaft has failed and will be replaced at the start of July. I have spoken to Komatsu all these works and repairs will be under warranty.
- Six monthly airport fuel inspection was carried out
- 3800 Hastings came out and serviced 250hr



AIRPORT REFUELLING FACILITIES

Fuel Quantities in Stock:

JetA-1: 15,600 litres Fuel used for the month: 200 litres

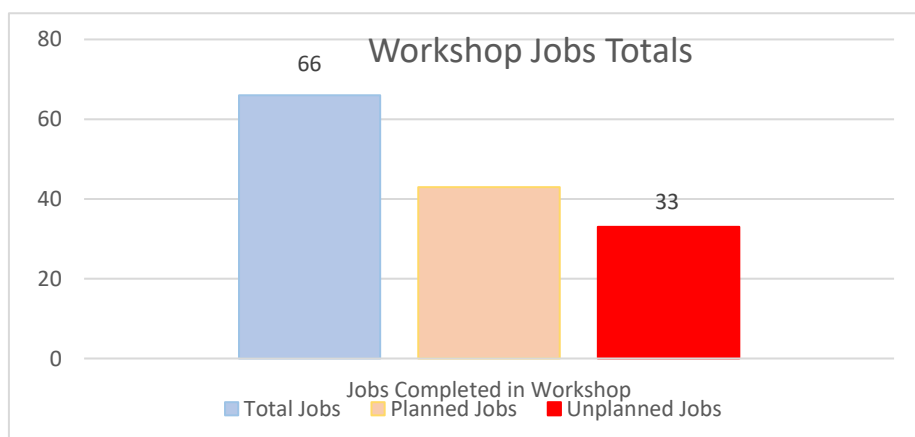
Avgas: 9,500 litres Fuel used for the month: 5,200 litres

Fuel Delivered:

No deliveries

WORKSHOP JOBS REPORT

The graph below shows work conducted by the Workshop for the month of 01/06/2020 to 01/07/2020 – 66 jobs in total with 23 unplanned jobs and 43 planned jobs.



OCCUPATIONAL HEALTH & SAFETY

COVID-19

STAFFING

Skye sadly has resigned from the council with only 5 months left in her trade before she will be a qualified Diesel Fitter.

ENVIRONMENTAL ISSUES

Nil

CONTRACTORS

T & G carried out 3 services on cars due to workshop being busy on the Friday, with excessive services to be carried out on the RDO that all outdoor crew have on Fridays.

Outback Auto & Comms have been doing some minor repairs on electrical items with council fleet.

Komatsu has a lot of work for the workshop due to the work load. This has been increasing over the last six months and is starting to get very costly in workshop running expenses.

Last month we spent a total of \$7000 just in wages for Komatsu to work for council. I have Komatsu coming out for 5 more days with two fitters at \$130 an hour per fitter, plus travel.

This will cost about \$9000 dollars. I have managed to get travel under warranty but still will be expensive. This cost may get higher as we go as the work load in the workshop has increased over the last three months. I have been getting a lot of local contractors to carry out work but this is eating the workshop operational budgets up very quickly.

Operational Status Report

Water and Sewerage

1.3 (07/20) – Water and Sewerage Operational Status Report

Author: Alan McNall

IX 197315

WATER

Water – Consumption

Raw Water Consumption statistics

Locality	Monthly Use (meg)	2019/20 YTD Total (meg)	Annual License (kl)	% Time Remaining	% of License Remaining
Quilpie	104.14				
Eromanga	2.7	(30/4/20-01/7/20)			
Adavale	-	-			

Water - Call-outs

Locality	Date	Time	Details	Outcome/ Comment
70 Quarrion St	24/05/20	11am	Burst service	complete

Water - Planned Interruptions (Customer Supply Cut)

Locality	Date	Details/ Reason	Notification Details	Time to restore supply
41 Brolga St	17/06/20	Repair leaking service	Verbal	1/2hr

Water - Unplanned Interruptions (Customer Supply Cut)

Locality	Date	Details/ Reason	Notification details	Response time	Time to restore supply
hospital	09/06/20	Burst main	Verbal	10min	2hrs
Adavale	25/06/20	Leaking main	Verbal	N/A	1hr

Water - Minor Works / Breaks / Repairs

Locality	Date	Details/ Reason	Mains repair	Service repair	Service replace	New mains	outcome and comments
52 Pegler St	08/05/20	Leak		Yes			complete
75 Pegler St	08/05/20	Leak		Yes			complete
Eromanga, Webber St	13/05/20	Leak		Yes			complete
Eromanga, Deacon St	13/05/20	leak			yes		complete

59 Quarrion St	26/05/20	Leak			Yes		complete
14 Jabiru St	12/06/20	Leak		Yes			Complete
60 Boonkai St	12/06/20	Leak			Yes		complete
8 Boonkai St	16/06/20	Leak			Yes		complete

Water - New Services

Nil

Water – Complaints / Requests

Nil

SEWERAGE - STATUS DETAILS

Sewerage - Overflows / Breaks / Repairs

Locality	Date	Details/ Reason	Overflow private Pty (Y/N)	EPA notified	Sewer break	Sewer choke	House conn problem (✓)	Response Time
17 Brolga St	22/05/20		No			Yes		4hrs

Sewerage - Minor Works / Breaks / Repairs

Locality	Date	Details/ Reason	Mains repair	Connection Point	House Drain	Response time (notification / completion)
44 Winchu St	18/05/20	Blocked drain		Yes		Complete
Eromanga Motel	17/06/20	Blocked drain			Yes	Complete

Sewerage - Call-outs

Nil

Sewerage - New Connections

Nil

Sewerage – Complaints

Nil

Capital Works and Council Requests

Project details	Status/Comments	% Complete
30mt water main replacement Chipu/Pegler St road crossing.	Wip	
New bore head works and 50mt connection into existing. Old to be capped and tidied up.	Wip	

Other Works and Requests.

Complete 45 x requests on council buildings/infrastructure.

Various works on Eromanga RO plant and sewerage pump station.

Various swimming pool repairs.

Operational Status Report

Corporate and Community Services

2 CORPORATE AND COMMUNITY SERVICES

2.1 (07/20) – Director of Corporate and Community Services Operational Status Report

Author: Lisa Hamlyn

IX 197277

CONDOLENCE CARDS

- Nil

CURRENT FUNDING PROGRAMS

- Combatting Pest & Weeds During Drought (Pest Weed Component)
- Get Ready Program 2019/2020 (surplus) and 2020/2021 Program
- WQPHN (Western Queensland Primary Health Network)
- TRAIC (Tackling Regional Adversity Through Integrated Care)

NDIS – ACCESS FOR ALL PROGRAM ADVISORY GROUP (CHECKUP)

Invitations were invited from leaders located in regional, rural and remote Queensland, with a lived experience of disability or those with an interest in disability to join a new State Wide Advisory Group – The Access for All Project. The project aims to support improvements in the delivery of accessible and inclusive mainstream health services to meet the needs of people with a lived experience of disability, families and support teams. An Expression of Interest was submitted for Chris Houghton to be considered for representation on this group.

Whilst Chris's EOI was unsuccessful for representation due to overwhelming interest in the Advisory Group, Chris has been invited to join an interest group which will offer an opportunity for involvement in other areas including case studies, and input into the barriers and experiences encountered by persons with a disability trying to access mainstream health providers.

SWHHS – CAN BOARD MEETING

A SWHHS Community Advisory Network Meeting, chaired by Karen Tully was held via Zoom on 22 June 2020. Meeting agenda items included:

- Executive Leadership Team – Introduction of new members
- Service Directions – COVID Community Rebalancing
- Operational Plan 2020-21
- Access to My Healthcare (new online app)
- CAN Forum, Charleville 27 October 2020
- Annual SWHHS Staff Awards, Charleville 26 October 2020

SWHHS – MASTER PLANNING PROJECT

Mayor - Cr Mackenzie, Quilpie MPHS DON - Gary Steer and myself were invited by SWHHS Chief Executive, Linda Patat to participate in a Microsoft Teams meeting on 26th June 2020 with Don Marshall, contracted architect (Thomson Adsett). SWHHS is undertaking a Master Planning Project

and the purpose of the Master Plan is to identify and evaluate planning options for service delivery across the region. The meeting involved discussion regarding evaluation of how SWHHS facilities best provide health services considering demographics, future trends, existing asset bases and condition, capital, operational / recurrent costs and the future direction for the service.

WQPHN – WESTERN QUEENSLAND PRIMARY HEALTH NETWORK

Mayor – Cr Mackenzie, CEO – Dave Burges, Cr Paulsen and I met with Stuart Gordon – CEO, WQPHN to discuss the current service program provided in the community funded by WQPHN and the future direction of health services, including a more innovative and collaborative approach to delivery of a health care model suited to our Shire / region.

SHIRE COMMON MUSTERS

The Quilpie Shire Common Muster took place on 5 & 6 June 2020.

I would like to sincerely thank Rebecca Thompson for undertaking the administration tasks associated with the Common Muster.

The Adavale Common Muster will take place on 17 & 18 July 2020.

CLOSURE OF FACILITIES / CANCELLATION OF EVENTS

The official opening of Ricks Jump Up Memorial has been postponed until ANZAC Eve 2021.

Operational Status Report

Pest and Livestock Management

2.2 (07/20) – Pest and Livestock Management Coordinator Operational Status Report

Author: Damien McNair

IX: 197279

PROPERTY INSPECTIONS / TRAPPING

Traps Set	Properties
	Possamunga Wanko North Comongin Araluen Regleigh Monler Nerrigundah

1080 BAITING / HOTSPOT BAITING

Hand Baiting	Properties
	Cudgee Piastre Tallyabra Kyabra Burkobulla

SCALPS PRESENTED TO COUNCIL – 01/07/2019 TO 30/06/2020

Property	No. Of Scalps			Amount of Payment
	Male	Female	Pups	
Varna	7	12		950.00
Tallyabra	6	5		550.00
Monler	6	4		500.00
Plevna	11	4		750.00
Cowley	26	10		1800.00
Regleigh	2	1		150.00
Trinidad	16	14		1500.00
Keeroongooloo	20	5	6	1550.00
Moondilla	4	1		250.00

Quilpie Common	1			50.00
Prairie	15	3	2	1000.00
Wellclose	1	1	19	1050.00
Goombie	18	7		1250.00
Yallamurra	7	2	3	600.00
Bunginderry	8	5	2	750.00
Ray	5	5		500.00
Canaway	6	5	1	600.00
Mobil	1	1		100.00
Kyabra	5	1		300.00
Wallyah	6	4	8	900.00
Patricia Park	5	5	6	800.00
Colac / Munberry	4	4		400.00
Mt Howitt	14	2		800.00
Lochabie	6	5		550.00
(353)	200	106	47	17,650.00

**There have been no additional wild dog bonus scalps submitted this month*

SURVEILLANCE CAMERAS / GPS

- FULCRUM

MEETINGS / TRAINING

- Authorised Officer Training – 18th June 2020
- Biosecurity Training – 16th & 17th June 2020

PLANT

- Toyota Ute – Good
- Canam - Good

EXCLUSION FENCING INSPECTIONS

- Monler
- Cranstoun
- Belombre
- Colac
- North Comongin

GENERAL

- Quilpie Common Muster - 5th & 6th May 2020
- Annual leave

Operational Status Report

Rural Lands

2.3 (07/20) – Rural Lands Officer Operational Status Report

Author: Andrew Byrne

IX 197265

COMMON AND RESERVES

Reserve	Condition	Notes
Quilpie Common	Good	Stock good
Dillons Well Reserve	Good	Partial feed (New pump currently being installed at bore)
Warrabin Lane	Good	Reserve good – stock currently on agisted on reserve
Eromanga Common	Good	Stock good – a lot of dry feed on common
Adavale Common	Good	Stock Good – Common Muster July

WEEDS - GENERAL

Declared Weed	Property	Action	Packs	Chemical	Diesel/L
Nil					

COMMUNITIES COMBATING PESTS AND WEEDS DURING DROUGHT PROGRAM

Follow up treatment was undertaken by Rural Lands Officer and Contractor during May / June on the following properties:

Declared Weed	Date	Property	Action	Chemical	Diesel/L
Mesquite	25 – 26 May	Woolbuna	Spray	35L	
	27 – 29 May 8 – 12 June	Como	Spray	135L	

5.8L Triclopyr Herbicide and 300L diesel were also utilized spraying weeds at Como

WILD DOG CONTROL

1080 Baiting	Property	Action
Nil		

LOCAL LAWS / ANIMAL CONTROL

Nil

PLANT & EQUIPMENT

Unit	Description	Status
1105	Toyota Hilux	Good
4504	Can-am Defender	Good

4502	Motorbike (Honda)	Good
------	-------------------	------

GENERAL

Quilpie Common Muster took place 5 & 6 June 2020 and went well. A good number of cattle owners turned up to assist and were present at the yards. Several cattle did not come in this muster but will be picked up during next muster. 45 common cattle were sold.

Adavale common muster will take place 17th July 2020.

Operational Status Report

Health Promotions

2.4 (07/20) – Health Promotions Officer Operational Status Report

Author: Michelle Donohue

IX 197046

COMMUNITY ACTIVITIES AND SENIORS PROGRAM

With the easing of Queensland's COVID – 19 restrictions now at stage 2, the Community and Activities Program has not yet re-commenced. I am telephoning, emailing and conducting welfare checks on seniors in the Quilpie Shire Community. Healthy Ageing Fun Packs are still being delivered and mailed out to some seniors in the community. They look forward to their weekly Healthy Ageing Fun Packs.

On Thursday 18 June, a COVID Cuisine Connection luncheon was held for seniors in the community. Forty-six people received a free two-course meal from the Imperial Hotel. Nicola and I delivered the meals to the seniors in their homes. Thanks to Ann and Blue Lewis and staff for the outstanding job they did in having the meals ready to deliver. I have received many comments from the seniors about the delicious meal provided by the Imperial Hotel and thank you to the Quilpie Shire Council HPO Program for organising the luncheon.

We are still waiting for confirmation from Western Queensland Primary Health Network (WQPHN) in regard to the purchase of requested items for the HPO Program, utilizing some of the "underspend" in the program.

Jerry Unser, Director of Compass Learning from Emmanuel College, Gold Coast and senior students would normally be here at this time of the year in our community doing activities with the children, engaging with the seniors and helping local organisations with events. They are very disappointed, but due to COVID – 19 they had to delay their visit until next year.

We now have Wi-Fi connected at the CWA hall. This will be of great benefit to the Seniors and Youth Programs and other services using the facility.

HEALTH PROMOTIONS

June was Bowel Cancer Awareness month. Information was placed on local and staff noticeboards and in the Community Newsletter. No male staff had any questions to be answered on Mental Health and Health Issues during Men's Health Week. As a health Initiative for Men's Health Week 15 -21 June the male workforce received a Health & Wellbeing Gift Pack.

Quilpie Pharmacist, David Do advised we have three staff that still have not acquired their flu vaccines from the pharmacy.

Each week on Mondays, I have been sharing motivational and health & wellbeing quotes with the administration staff as well as office desk exercises to do whilst at work.

STAFF

I participated in an Interagency Meeting via teleconference on Tuesday 9 June. Attendees gave a brief update in their areas. South West Hospital Health Service (SWHHS) continues to provide regular updates on COVID – 19.

I have registered to participate in two, free short online courses focusing on Dementia. What is dementia? And a problem – solving approach to behaviors.

Nicola has been working well in her role as Community Assistant. Her confidence over the past few months has grown and she is happy to put her ideas forward and contribute to the program.

Nicola and I have been planting trees in the CWA hall grounds. The community vegetable garden is going well.

Operational Status Report

Library

2.5 (07/20) – Librarian Operational Status Report

Author: Janet Foley

IX 197172

GENERAL INFORMATION

During June, I have continued to supply a number of community members with books through home delivery, pick up or dispatch via mail truck.

Ongoing day to day tasks are still being undertaken, such as running the Daily Reserve Report which as outlined in last month's report, takes considerable time.

All books that come into the Library via mail or loan returns are wiped with disinfectant wipes and placed in quarantine for 3 days as recommended by State Library of Queensland.

The Library reopened on Monday 15 June with restrictions and limited hours. Current opening hours are Monday, Tuesday and Thursday from 10.00am – 1.00pm.

Restrictions that have been put in place are:

- A maximum of 10 people in the Library
- No children allowed as small children are unlikely to understand and comply with social distancing recommendations
- Only two Public Access Computers available for use with a time limit of 30 minutes
- No use of Council owned iPads and Robotic and Coding equipment
- A limit of 30 minutes Wi-Fi usage within the library
- Tape has been installed on flooring at entrance, front desks and Self Access Booth.
- Appointments to be made for use of Centrelink Self Access booth.
- Plastic mesh barrier has been installed to prevent entry to the children's area
- Sanitation Station set up at front door entry
- Hand sanitizer available at front counter, public computers, Self-Access booth and at various strategic areas throughout the Library
- Covid-19 Visitor Register Sheets have been placed at the entrance to the Library. A *Condition of Entry* is that all visitors and staff fill in the relevant details which include name, address and phone number. All data is transferred to a spread sheet on the computer and stored for the mandatory 56 days, as required by Queensland Health.

Aaron Marsh spent two days at the Library, installing much needed shelving in the office section, kitchen and spare office. This will now enable us to shelve files, archive boxes, toys and robotic and coding equipment that were previously stored in boxes on the floor.

We have received our second allocation of toys through State Library Queensland's First Five Forever Community Literacy Project 'Libraries as Play Based Spaces'. Each library within RLQ is allocated an amount of funds based on population. We are then able to order toys through State

Library from a list of toys and resources provided by them. Quilpie's 1st allocation in Round 1 in October 2019 was \$1,352 which enabled us to receive a fantastic range of sensory and learning resources/toys. Quilpie was allocated \$513 in Round 2 of the project in May 2020 and received the toys ordered during the past month. SLQ is unsure if there will be further funding for this project.

Karen Grimm kindly allowed Megan McFadzean to assist me for a few hours on Thursday to commence sorting out the paperwork etc. that is currently in boxes.

STATISTICS

Since reopening on 15th June, I have had a total of 52 people visit the library. Visitors to the Shire are slowly starting to come to the library, mainly to access Wi-Fi or the Public Access computers.

EXAMINATIONS

Nil

ACTIVITIES

Nil

HISTORY

I continue to receive an increasing number of history and cemetery enquiries.

EVENTS

Nil

VISITING SERVICES

All further visits and services have been cancelled or postponed until further notice to COVID-19.

CEMETERY / FUNERALS

Nil

STAFF

Megan Rojek is currently assisting Nina Burges in the Governance Department.

Operational Status Report

National Disability Insurance Scheme

2.6 (07/20) – NDIS Coordinator's Status Report

Author: Chris Houghton

IX 197278

GENERAL INFORMATION

In June I have had the opportunity to register an Expression of Interest to the Access for All Advisory Group, which aims to support improvements in the delivery of accessible and inclusive mainstream health services to meet the needs of people with lived experiences of disability, families and support persons. This group is targeting regional and remote communities throughout Queensland. Although not successful to be included in the Advisory Group, I have been selected to be part of the interest group to develop Training Packages for Health Professionals.

I have also been participating in National Disability Services QLD, Three part webinar, Fast Facts for providers and their concerns regarding the NDIS, and the diminishing Service providers due to the constraints of the NDIA.

The Primary Health Network has also provided a webinar on Competently Using Tools for Telehealth in Rural and Remote Service Provision. This webinar will be a useful tool in coming weeks as there are NDIS Plan Reviews (12 months) coming up and I think it will be advantageous for the participants to use this type of technology rather than over the phone. The NDIS Local Area Coordinator still cannot travel from Charleville to Quilpie due to Covid-19.

STATISTICS

STATISTICS	NDIS Client Meetings	NDIS Provider Assistance Meetings	Agency Meetings
	8	3	2

CURRENT ISSUES

- Monetary amounts in Participant Plans - how they are determined and by whom
- Service Provider admission to the NDIS Marketplace.

CORRESPONDENCE / NEWSLETTERS

- PHN Webinars
- NDIS and Checkup Flyer
- Anglicare newsletter
- NDIS Newsletter

Operational Status Report

Finance

3 FINANCE

3.1 (07/20) – Manager of Financial Services Operational Status Report

Author: Arminda David

IX 197386

Cheque Register

For the period ending 30 June 2020

Date	Cheque #	Payee	Description	Amount
1/06/2020	CHARGE	ANZ Banking	Merchant Fee	198.85
2/06/2020	1ATOPAYG	Australian Taxation Office	Pay Dedns Pay 1 Period No 24	40,191.00
2/06/2020	1CFMEU24	Construction, Forestry, Mining	Pay Dedns Pay 1 Period No 24	34.00
2/06/2020	1CHILD24	Child Support Agency	Pay Dedns Pay 1 Period No 24	1,820.58
2/06/2020	1LGSUPCL	LG Super Clearing House	Pay Dedns Pay 1 Period No 24	132.11
2/06/2020	1LGSUPCL	LG Super Clearing House	Pay Dedns Pay 1 Period No 24	299.79
2/06/2020	1LGSUPCL	LG Super Clearing House	Pay Dedns Pay 1 Period No 24	110.88
2/06/2020	1LGSUPER	LGSuper	Pay Dedns Pay 1 Period No 24	500.00
2/06/2020	1LGSUPER	LGSuper	Pay Dedns Pay 1 Period No 24	1,524.84
2/06/2020	1LGSUPER	LGSuper	Pay Dedns Pay 1 Period No 24	346.44
2/06/2020	1LGSUPER	LGSuper	Pay Dedns Pay 1 Period No 24	7,372.06
2/06/2020	1LGSUPER	LGSuper	Pay Dedns Pay 1 Period No 24	169.66
2/06/2020	1NAB24	National Australia Bank Limited	D/Cr Pay 1 Period No 24	131,411.02
2/06/2020	1SALPACA	Salary Packaging Australia	Pay Dedns Pay 1 Period No 24	1,676.59
2/06/2020	1SALPACA	Salary Packaging Australia	Pay Dedns Pay 1 Period No 24	1,135.33
2/06/2020	SGL PY1P	LGSuper	SGL Pay No 1 Period 2020/24	18,890.90
2/06/2020	SGL PY1P	LG Super Clearing House	SGL Pay No 1 Period 2020/24	2,149.83
2/06/2020	45570499	National Australia Bank Limited	Credit Card May 20	8,243.74
5/06/2020	E010560	SC & KG Bowen	2019 FD Works	108,359.80
5/06/2020	E010561	Cutting Edges Equipment Parts	Tooth Scarifier	742.50
5/06/2020	E010562	Peter E.J Donohue	Deform bar and black plastic	440.00
5/06/2020	E010563	Elders Limited	Weedmaster	1,571.35
5/06/2020	E010564	Ergon Energy Queensland Pty Ltd	Toompine Camp	539.03
5/06/2020	E010565	Gavan Mathiske - Painting +Plastering	Paint Amenties Eromanga	4,950.00
5/06/2020	E010566	BHL & DA Hall Transport	Single water tanker	9,900.00
5/06/2020	E010567	Hartecs Group Pty Ltd	Progress Payment	15,205.85
5/06/2020	E010568	IOR Petroleum Pty Ltd	Diesel Fuel	2,035.54
5/06/2020	E010569	Komatsu Australia	Step	4,743.01
5/06/2020	E010570	Lowes Petroleum Service	Unleaded Petrol	2,070.42
5/06/2020	E010571	MAGIQ Software	Magiq Trianing	1,859.00

Date	Cheque #	Payee	Description	Amount
5/06/2020	E010572	Meads Foodwork's	Office Goods	136.98
5/06/2020	E010573	Outback Auto & Comms	Wire light bar into buggy	379.20
5/06/2020	E010574	Paulsen Brothers Foodworks	Wellspring Workshop supplies	99.29
5/06/2020	E010575	Position Partners Pty Ltd	Service	4,856.50
5/06/2020	E010576	Quilpie Hardware Roma Firefighting Equipment Pty Ltd	Tyres Location plastic signs	4,240.77 154.00
5/06/2020	E010578	Proterra Group	2020 FD Management	73,271.01
5/06/2020	E010579	Shire Networks	3 UPS units	531.30
5/06/2020	E010580	Signet Pty Ltd	Spot Marking Paint	310.46
5/06/2020	E010581	Sulo MGB Australia Pty Ltd	Green 240l Wheelie Bins	1,098.24
5/06/2020	E010582	Sunset Canvas Tica Default Tenancy Control Pty Ltd	Fabricate replacement shade 12 month subscription	2,651.00 55.00
5/06/2020	E010584	SL & SA Travers	FD Works	207,753.38
5/06/2020	E010585	Trilium Software	Map info Foundation Pack	7,484.40
5/06/2020	E010586	Waterdrill Australia Pty Ltd	Progress Payment	112,422.20
5/06/2020	E010587	West-Tech Systems Pty Ltd	Photocopier Bill May 20 #393	733.46
5/06/2020	28363	Telstra Corporation Limited	Main Account	6,172.38
5/06/2020	30205888	National Australia Bank Limite	Overseas Trasnfer Fee	18.00
11/06/2020	E010588	Tutt Bryant Equipment	Waterpump for 111	938.18
11/06/2020	16142714	Quilpie Shire Council	Fundraising Expense Transfer	1,839.52
11/06/2020	16142781	Quilpie Shire Trust Adavale Plant Hire - V & J Richardson	Trust Deposit Transfer FD Works 2019	970.00 271,230.36
12/06/2020	E010589	APN Newspapers Pty Ltd	Job Advert	848.99
12/06/2020	E010591	Artcraft Pty Ltd Aurora Information Technology Pty Ltd	Depth indicators Licence renewal	533.21 1,311.53
12/06/2020	E010593	Australia Post	Postage	441.82
12/06/2020	E010594	Black Truck Sales	Solenoid	219.97
12/06/2020	E010595	Steve Bonsey Transport	Loader Hire	1,100.00
12/06/2020	E010596	Brown & Hurley Group Pty Ltd	1st Service	5,175.71
12/06/2020	E010597	Chorus Call Australia Pty Ltd	Conference Calls	110.25
12/06/2020	E010598	Costello Carriers	freight air coolers	154.00
12/06/2020	E010599	DHL Express	Charges of Video Projector	2,217.99
12/06/2020	E010600	Delnorth Pty Ltd Sajer Trust T/A Elle's	Yellow Guide Posts Tape, Copy paper Corded	1,879.35 Mouses
12/06/2020	E010601	Newsagency Ergon Energy Queensland Pty Ltd	Mouses Various Accounts	282.93 39,060.49
12/06/2020	E010602	Karen Grimm	Reimbursement Claim	64.00
12/06/2020	E010603	G & T Mechanical	Shopfront Reimbursement	500.00
12/06/2020	E010604	Hewsonhall Electrical Centre	Hand Sanitiser	1,273.10
12/06/2020	E010605	Dan & Lousie Hoch	Catering for Anne Leahy Dinner	810.00
12/06/2020	E010606	IOR Petroleum Pty Ltd	Bulk Diesel	29,096.59
12/06/2020	E010607	Jacko's Mobile Trim Shop	Seat Repairs	1,375.00
12/06/2020	E010608	Ann Kent	Rent 29-05 TO 11-06	360.00

Date	Cheque #	Payee	Description	Amount
12/06/2020	E010610	Meads Foodwork's	Cleaning products	208.55
12/06/2020	E010611	M & L Carriers	Freight	14.52
12/06/2020	E010612	Civica Solutions Pty Ltd	PCS Training	1,155.00
12/06/2020	E010613	Peak Services	HR Assist Renewal	3,850.00
12/06/2020	E010614	Quilpie Country Collections	Shop front subsidy	1,650.00
12/06/2020	E010615	QCWQ Branch Quilpie	Refund Hire Deposit	225.00
12/06/2020	E010616	Quilpie Hardware	Cut Off Saw	1,096.07
12/06/2020	E010617	Mulga Mates Centre Inc	Catering 03-06-20	200.00
12/06/2020	E010618	QLD Local Government Mutual Liability	Public Liability Insurance	50,883.85
12/06/2020	E010619	Quilpie Diggers Race Club	Refund Hire Deposit	300.00
12/06/2020	E010620	Quilpie Shire Council	SWRRG Contribution	5,229.09
12/06/2020	E010621	Maree Radnedge	Refund Hire Deposit	50.00
12/06/2020	E010622	Proterra Group	DRFA TMR FD Data	8,394.10
12/06/2020	E010623	Salary Packaging Australia	GST To 11/06/20	136.06
12/06/2020	E010624	Shepherd Services	Tech Co Service 26/10 - 29/11 Service Agreement 12/05-11/08	26,329.12
12/06/2020	E010625	Shire Networks		10,683.52
12/06/2020	E010626	IXOM Operations Pty Ltd	Chlorine Cylinder Hire - May	422.84
12/06/2020	E010627	Teletrac Navman and Transtech	Navmans	65.89
12/06/2020	E010628	Waterdrill Australia Pty Ltd	Progress Payment	411,668.40
12/06/2020	E010629	West-Tech Systems Pty Ltd	Photocopier Bill May 20 #404	5,997.72
12/06/2020	E010630	Work Metrics Pty Ltd	Monthly Fee	198.00
12/06/2020	E010631	Adavale Plant Hire - V & J Richardson	Machinery hire	2,800.00
12/06/2020	E010632	APV Contracting Pty Ltd	Float hire & excavator hire	4,590.00
12/06/2020	E010633	Channel Country Tourist Park	Accom - P O'Regan	1,250.00
12/06/2020	E010634	Clem & Co.	Cypress chips	1,900.00
12/06/2020	E010635	Cranbrook Press	Tally Books	635.00
12/06/2020	E010636	Followmont Transport Pty Ltd	Freight	405.04
12/06/2020	E010637	Golf Australia	Outback Masters Event Fee	22,000.00
12/06/2020	E010638	G & T Mechanical	10,000km service	784.05
12/06/2020	E010639	BHL & DA Hall Transport	Single water tanker hire	5,610.00
12/06/2020	E010640	Hewsonhall Electrical Centre	Rheen hot water system	1,100.00
12/06/2020	E010641	Landmark (QLD) Limited	Hexazinone	5,553.51
12/06/2020	E010642	Maney Transport	Freight	701.87
12/06/2020	E010643	Master Plumbers Association of QLD	Membership	1,295.00
12/06/2020	E010644	Meads Foodworks	Morning tea supplies	130.14
12/06/2020	E010645	Osborn Consulting Engineers Pty Ltd	Toompine wheelchair access	1,221.00
12/06/2020	E010646	Pavement Management Service	Pavement management	19,899.00
12/06/2020	E010647	Pumps N Solar	Pump set	14,723.87
12/06/2020	E010648	Quilpie Hardware	Tyres	1,015.04
12/06/2020	E010649	Mr Kevin J Richardson	Repairs to truck and trailer	3,074.50
12/06/2020	E010650	Stafford Welding Products	Welding supplies	413.00
12/06/2020	E010651	Warrego Signs	No camping signs	560.00
12/06/2020	28364	DNRME	Valuation Roll Maintenance	231.90

Date	Cheque #	Payee	Description	Amount
12/06/2020	28365	Ovarian Cancer Australia	2020 Donation - Morning Tea	185.54
12/06/2020	28366	Telstra Corporation Limited	Navmans	377.79
15/06/2020	E010652	The Murray Trust	Exclusion Fence - 25km	27,500.00
16/06/2020	1ATOPAYG	Australian Taxation Office	Pay Dedns Pay 1 Period No 25	41,469.00
16/06/2020	1CFMEU25	Construction, Forestry, Mining	Pay Dedns Pay 1 Period No 25	34.00
16/06/2020	1CHILD25	Child Support Agency	Pay Dedns Pay 1 Period No 25	1,830.12
16/06/2020	1LGSUPCL	LG Super Clearing House	Pay Dedns Pay 1 Period No 25	137.19
16/06/2020	1LGSUPCL	LG Super Clearing House	Pay Dedns Pay 1 Period No 25	299.79
16/06/2020	1LGSUPCL	LG Super Clearing House	Pay Dedns Pay 1 Period No 25	110.88
16/06/2020	1LGSUPER	LGSuper	Pay Dedns Pay 1 Period No 25	500.00
16/06/2020	1LGSUPER	LGSuper	Pay Dedns Pay 1 Period No 25	7,372.25
16/06/2020	1LGSUPER	LGSuper	Pay Dedns Pay 1 Period No 25	346.44
16/06/2020	1LGSUPER	LGSuper	Pay Dedns Pay 1 Period No 25	1,421.44
16/06/2020	1LGSUPER	LGSuper	Pay Dedns Pay 1 Period No 25	169.66
16/06/2020	1NAB25	National Australia Bank Limited	D/Cr Pay 1 Period No 25	132,333.18
16/06/2020	1SALPACA	Salary Packaging Australia	Pay Dedns Pay 1 Period No 25	1,831.13
16/06/2020	1SALPACA	Salary Packaging Australia	Pay Dedns Pay 1 Period No 25	1,507.55
16/06/2020	SGL PY1P	LG Super Clearing House	SGL Pay No 1 Period 2020/25	2,169.96
16/06/2020	SGL PY1P	LGSuper	SGL Pay No 1 Period 2020/25	18,685.09
17/06/2020	2ATOPAYG	Australian Taxation Office	Pay Dedns Pay 2 Period No 26	1,348.00
17/06/2020	2NAB26	National Australia Bank Limited	D/Cr Pay 2 Period No 26	25,856.84
17/06/2020	SGL PY2P	LG Super Clearing House	SGL Pay No 2 Period 2020/26	419.97
17/06/2020	SGL PY2P	LGSuper	SGL Pay No 2 Period 2020/26	2,164.49
19/06/2020	E010653	Aprilla Grids Pty Ltd	Stock grids	44,735.90
19/06/2020	E010654	Artcraft Pty Ltd	Signs	1,932.46
19/06/2020	E010655	Civica Pty Limited	Reflect support training	550.00
19/06/2020	E010656	Austek Spray Seal Pty Ltd	Reseal Quilpie - Adavale Rd	175,133.97
19/06/2020	E010657	BN & A Bannerman	Freight	121.00
19/06/2020	E010658	Steve Bonsey Transport	Single water tanker hire	23,633.50
19/06/2020	E010659	Brown & Hurley Group Pty Ltd	Brake valve, relay valves	517.37
19/06/2020	E010660	Kerry M Castles	Reimbursement Claim	239.98
19/06/2020	E010661	Channel Country Refrigeration	Unit 10 Air-con	506.00
19/06/2020	E010662	Clarke Equipment Sales Pty Ltd	Tungstens	701.80
19/06/2020	E010663	TA & MA Collins	Shopfront Scheme	2,805.00
19/06/2020	E010664	Winc Australia Pty Ltd	Wireless combo & mop heads	257.45
19/06/2020	E010665	Elders Limited	Black post	1,925.60
19/06/2020	E010666	Sajer Trust T/A Elle's Newsagency	Stationery	1,650.06
19/06/2020	E010667	Five By Five Online Pty Ltd	Website Hosting 12 months	5,940.00
19/06/2020	E010668	Gavan Mathiske - Painting + Plastering	Paint exterior of VIC	13,200.00
19/06/2020	E010669	Golders Charleville	Shirts	869.71
19/06/2020	E010670	Great Western Electrical	ENHM Power issue	264.00
19/06/2020	E010671	BHL & DA Hall Transport	Single water tanker hire	7,342.50
19/06/2020	E010672	Hastings Deering (Australia) Limited	Seal kits	812.50
19/06/2020	E010673	Luke Hunter	Refund of Overpayment	35.54

Date	Cheque #	Payee	Description	Amount
19/06/2020	E010674	Hydrapower Attachments	Trencher teeth	2,030.60
19/06/2020	E010675	Imperial Hotel Motel	Catering 10/11 - 03-20	345.00
19/06/2020	E010676	Just Grazing	Fencing-20.4km @ \$3500 + GST	78,540.00
19/06/2020	E010677	Landmark (QLD) Limited	Iple poly pipe	3,476.11
19/06/2020	E010678	Maney Transport	Freight	477.01
19/06/2020	E010679	Meads Foodwork's	Goods for VIC	29.16
19/06/2020	E010680	Mental Health Awareness	Advertsing	484.00
19/06/2020	E010681	Monler Pastoral Co	Refund of overpayment	614.00
19/06/2020	E010682	Murweh Shire Council	SW Flood Gauge Network	52,931.00
19/06/2020	E010683	New State Builders Pty Ltd	Progress Claim	907,671.89
19/06/2020	E010684	Orion Satellite Systems	EWTP Fee	309.90
19/06/2020	E010685	Outback Auto & Comms	Repair UHFs	380.00
19/06/2020	E010686	Outback Spares	Air filter	50.57
19/06/2020	E010687	Quilpie Club Inc	Refund of Rates	2,455.64
19/06/2020	E010688	QCWQ Branch Quilpie	Catering 12-06-20	80.00
19/06/2020	E010689	Quilpie Hardware	Plants & Mix	1,558.30
19/06/2020	E010690	Quilpie Motor Inn	Refund of Rates	2,361.22
19/06/2020	E010691	Quilpie Shire Council	Transfer of Rates - Harkaway	999.00
19/06/2020	E010692	Quilpie Sporting Clays Club	Catering 12-06-20	200.00
19/06/2020	E010693	Ramafin Pty Ltd	Workshops	5,065.00
19/06/2020	E010694	R & O Communications	Fixing conference phone	42.35
19/06/2020	E010695	South West Ford	Assy	264.35
19/06/2020	E010696	Tweed Pastoral Holdings Pty Ltd	Refund of Overpayment	921.00
19/06/2020	E010697	Warrego Couriers	Freight	69.99
19/06/2020	E010698	Western Travel Service (Qld) P/L	Travel - Tafe	211.00
19/06/2020	E010699	Western Wholesalers	Phenyle	37.00
19/06/2020	28367	Bull Creek Opals Pty Ltd	Refund of Rates	347.03
19/06/2020	28368	Queensland Transport	Rego #3800 77772C	279.45
19/06/2020	28369	Residential Tenancies Auth.	Bonds	2,232.00
19/06/2020	28370	Telstra Corporation Limited	Sat Phones	333.01
24/06/2020	CHARGE	National Australia Bank Limited	Connect Fee	129.22
25/06/2020	1ATOPAYG	Australian Taxation Office	Pay Dedns Pay 1 Period No 26	236.00
25/06/2020	1LGSUPCL	LG Super Clearing House	Pay Dedns Pay 1 Period No 26	217.06
25/06/2020	1NAB26	National Australia Bank Limited	D/Cr Pay 1 Period No 26	1,274.53
25/06/2020	SGL PY1P	LG Super Clearing House	SGL Pay No 1 Period 2020/26	434.12
26/06/2020	E010700	Airport OLS Surveys	Aerodrome Technical Inspect	7,639.00
26/06/2020	E010701	APV Contracting Pty Ltd	Truck & water tank hire	10,470.00
26/06/2020	E010702	J. Blackwood & Son Pty Ltd	Canvas Flags	663.19
26/06/2020	E010703	Black Truck Sales	Fix DPD fault	9,820.26
26/06/2020	E010704	BOC Limited	Acetylene & Argoshield Gas	803.07
26/06/2020	E010705	Steve Bonsey Transport	Plant Hire	19,211.50
26/06/2020	E010706	Brandon & Associates Pty Ltd	Building Certification 19/20	25,063.50
26/06/2020	E010707	BR Building Group	Demolition & Disposal of house	69,900.01
26/06/2020	E010708	Brown & Hurley Group Pty Ltd	Remove engine, chassis rebuild	49,515.89
26/06/2020	E010709	Bunnings Warehouse	Holman sprinkler irrigation	7.15

Date	Cheque #	Payee	Description	Amount
26/06/2020	E010710	Cadia Plumbing Equipment	stop tap gland	519.90
26/06/2020	E010711	Coates Hire Operations	Lunch Room package	416.66
26/06/2020	E010712	Colas	Supply and place Fabric strips	4,023.36
26/06/2020	E010713	CoolDrive Distribution	Brake & parts cleaner	286.00
26/06/2020	E010714	Cranbrook Press	Letterheads	2,159.00
26/06/2020	E010715	Cummins Toowoomba	Cover & seal ring	117.91
26/06/2020	E010716	Datafuel Financial Systems	Datafuel upgrade	49,746.18
26/06/2020	E010717	Eagle Gallery	Shopfront subsidy Claim	4,405.38
26/06/2020	E010718	ECQ	2020 Electiction Expenses	9,965.00
26/06/2020	E010719	Elegant Emu	Shopfront Subsidy Claim	443.75
26/06/2020	E010720	Elle's Newsagency	Seniors activity packs	286.55
26/06/2020	E010721	Gavan Mathiske - Painting +Plastering	Paint Jabiro Street	12,100.00
26/06/2020	E010722	Great Western Electrical	Replace stove at 67 Galah	5,062.07
26/06/2020	E010723	G & T Mechanical	Fits door lock mechanisms	473.00
26/06/2020	E010724	BHL & DA Hall Transport	Single water tanker hire	8,992.50
26/06/2020	E010725	Harvey Norman Toowoomba	Samsung Tablet & cases	1,224.00
26/06/2020	E010726	Dan & Lousie Hoch	Shopfront Subsidy Claim	2,530.48
26/06/2020	E010727	HPB Post Pty Ltd	Depot staff uniforms	1,170.62
26/06/2020	E010728	Imperial Hotel Motel	Catering 18-06-20	1,150.00
26/06/2020	E010729	IOR Petroleum Pty Ltd	DIESEL & ADBLUE	878.54
26/06/2020	E010730	Komatsu Australia	Filter Head	443.36
26/06/2020	E010731	LGAQ	Civic leaders Summit D Burges	770.00
26/06/2020	E010732	Lowes Petroleum Service	Unleaded	267.11
26/06/2020	E010733	Maney Transport	Freight	2,301.35
26/06/2020	E010734	Mead Perry Group	Progress Claim	2,073.50
26/06/2020	E010735	Meads Foodwork's	Milk	59.98
26/06/2020	E010736	Adam Murray	Fencing - 12km @ \$1000 + GST	13,200.00
26/06/2020	E010737	Paulsen Brothers Foodworks	Shopfront Subsidy Claim	10,424.55
26/06/2020	E010738	Quilpie Polocrosse Club Inc	Community Assistance	2,000.00
26/06/2020	E010739	Quilpie Hardware	Circle spray	5,618.08
26/06/2020	E010740	QLEAVE	QLEAVE - Various Projects	19,307.00
26/06/2020	E010741	Quilpie Pharmacy	Staff Vaccinations	364.90
26/06/2020	E010742	Mr Kevin J Richardson	Plant Hire & makeup Bollards	2,673.00
26/06/2020	E010743	Salary Packaging Australia	GST to 25-06-20	136.06
26/06/2020	E010744	Shire Networks	Thinkpad	3,850.44
26/06/2020	E010745	SLM (ALF) Quilpie Pty Ltd	Exclusion Fencing - 57.5km	221,375.00
26/06/2020	E010746	SWRED	Annual Contribution 20/21	22,000.00
26/06/2020	E010747	Total Tools Toowoomba	Ladder	1,472.00
26/06/2020	E010748	Traffic Control Supplies P/L	Signs	6,832.21
26/06/2020	E010749	Warrego Water Services Pty Ltd	Hunter pop ups	1,128.60
26/06/2020	E010750	Western Travel Service (Qld)	Bus ticket Levi	108.00
26/06/2020	16240605	Quilpie Shire Trust	Trust Deposit Transfer	620.00
30/06/2020	1ATOPAYG	Australian Taxation Office	Pay Dedns Pay 1 Period No 26	43,981.00
30/06/2020	1CFMEU26	Construction, Forestry, Mining	Pay Dedns Pay 1 Period No 26	34.00
30/06/2020	1CHILD26	Child Support Agency	Pay Dedns Pay 1 Period No 26	1,819.04

Date	Cheque #	Payee	Description	Amount
30/06/2020	1LGSUPCL	LG Super Clearing House	Pay Dedns Pay 1 Period No 26	141.31
30/06/2020	1LGSUPCL	LG Super Clearing House	Pay Dedns Pay 1 Period No 26	299.79
30/06/2020	1LGSUPER	LGSuper	Pay Dedns Pay 1 Period No 26	170.00
30/06/2020	1LGSUPER	LGSuper	Pay Dedns Pay 1 Period No 26	1,395.92
30/06/2020	1LGSUPER	LGSuper	Pay Dedns Pay 1 Period No 26	346.44
30/06/2020	1LGSUPER	LGSuper	Pay Dedns Pay 1 Period No 26	169.66
30/06/2020	1LGSUPER	LGSuper	Pay Dedns Pay 1 Period No 26	7,534.89
30/06/2020	1NAB26	National Australia Bank Limited	D/Cr Pay 1 Period No 26	137,401.45
30/06/2020	1SALPACA	Salary Packaging Australia	Pay Dedns Pay 1 Period No 26	1,831.13
30/06/2020	1SALPACA	Salary Packaging Australia	Pay Dedns Pay 1 Period No 26	1,507.55
30/06/2020	CHARGE	National Australia Bank Limited	Trust Fee	16.40
30/06/2020	CHARGE	National Australia Bank Limited	Operating Fee	33.80
30/06/2020	E010751	Black Truck Sales	New Truck	97,680.00
30/06/2020	E010752	Black Toyota	New Hilux	57,654.06
30/06/2020	E010753	Viv Byrne	Spraying 88 Hours	4,400.00
30/06/2020	E010754	Compac Sales Pty Ltd	Online Service Fee	104.50
30/06/2020	E010755	Construction Equip Australia Gavan Mathiske - Painting +Plastering	Seal kit & oring	2,206.23
30/06/2020	E010756		Painting Kookaburra House	14,300.00
30/06/2020	E010757	Andrew Hall	Spraying 145 hrs	7,975.00
30/06/2020	E010758	Hastings Deering (Australia)	Rental fee No 200011762	8,729.60
30/06/2020	E010759	Lowes Petroleum Service	Diesel	8,130.19
30/06/2020	E010760	Adam Murray	Exclusion Fencing - 16.5km	6,600.00
30/06/2020	E010761	O.C Heavy Vehicle Repairs	Labour Hire	900.00
30/06/2020	E010762	Peak Services	Authorised Persons Training	2,200.00
30/06/2020	E010763	Pressure Pumps Nq P/L	Supply & install pump	9,868.00
30/06/2020	E010764	Quilpie Hardware	Tyres & fit Unit 127	6,062.04
30/06/2020	E010765	Quilpie Motor Inn	Shopfront Subsidy Claim	4,060.77
30/06/2020	E010766	Shepherd Services	Update Transport Asset Plan	31,151.72
30/06/2020	E010767	Signet Pty Ltd	Line marking paint yellow	73.79
30/06/2020	E010768	Waterdrill Australia Pty Ltd	Progress Claim	25,399.00
30/06/2020	E010769	Aviation Components Pty Ltd	6 monthly inspection airport	1,955.80
30/06/2020	E010770	SC & KG Bowen	2019/2020FD Pinkenetta Rd	347,453.80
30/06/2020	E010771	Brown & Hurley Group Pty Ltd	Rebuild transmission	24,531.17
30/06/2020	E010772	Ensley Pty Ltd	Shopfront Subsidy Claim	8,650.00
30/06/2020	E010773	Farrago Interiors	VIC Joinery Deposit	12,199.75
30/06/2020	E010774	BHL & DA Hall Transport	Single water tanker hire	6,847.50
30/06/2020	E010775	Lowes Petroleum Service	Diesel Fuel	27,752.62
30/06/2020	E010776	Work Metrics Pty Ltd	Subscription Fee	198.00
30/06/2020	E010777	Chorus Call Australia Pty Ltd	Conference Call	48.05
30/06/2020	SGL PY1P	LGSuper	SGL Pay No 1 Period 2020/26	19,008.40
30/06/2020	SGL PY1P	LG Super Clearing House	SGL Pay No 1 Period 2020/26	1,950.29
30/06/2020	28371	Telstra Corporation Limited	Telstra Sat Phones	856.36
30/06/2020	504407	National Australia Bank Limited	Bpay Fee	136.84
TOTAL OF CHEQUES				\$4,941,601.96

Status Report

Chief Executive Officer

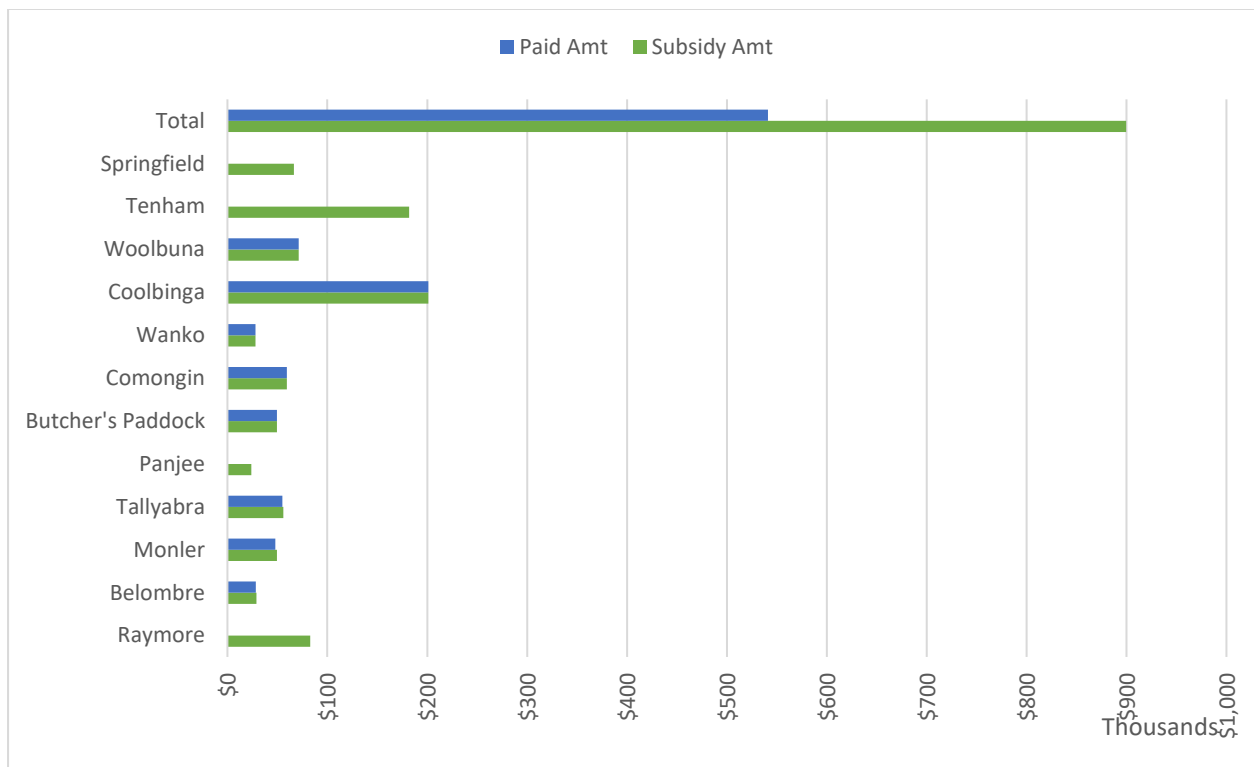
4 GOVERNANCE

4.1 (07/20) – Chief Executive Officer Status Report

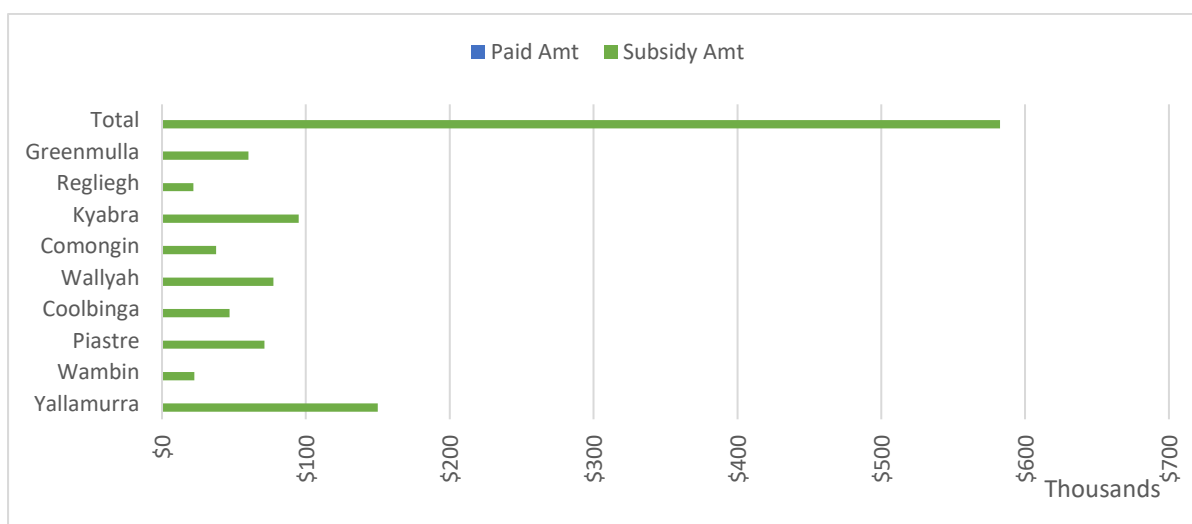
Author: Chief Executive Officer, Dave Burges

IX: 196877

EXCLUSION FENCE PROGRAM 2



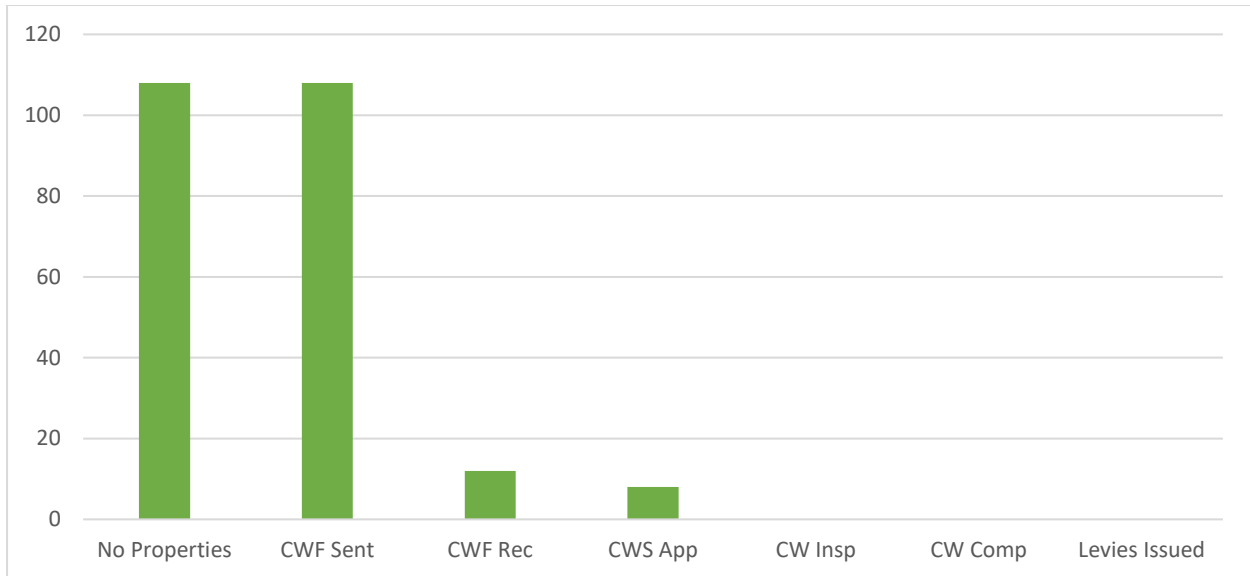
EXCLUSION FENCE PROGRAM 3



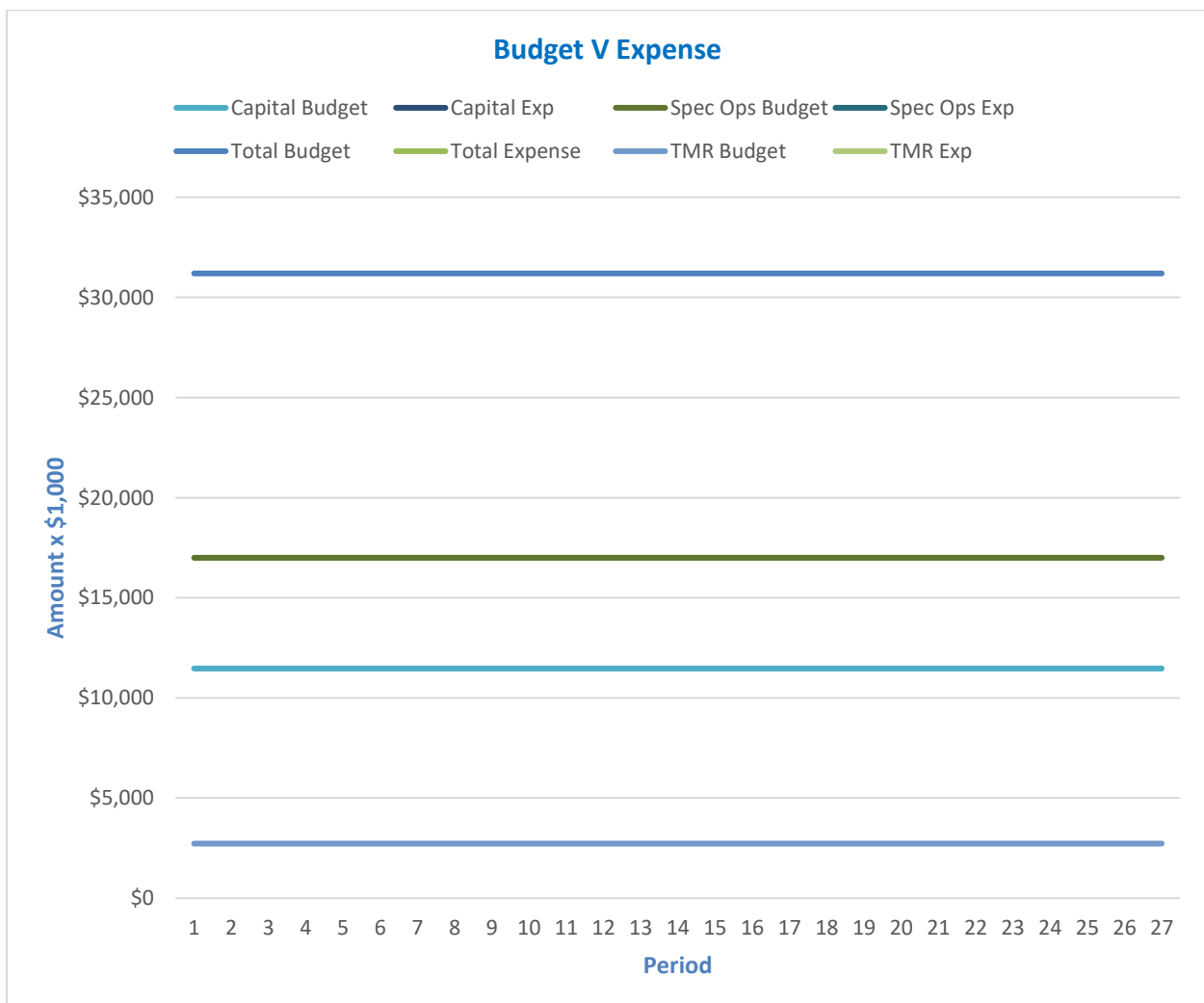
SHOPFRONT REFURBISHMENT PROGRAM



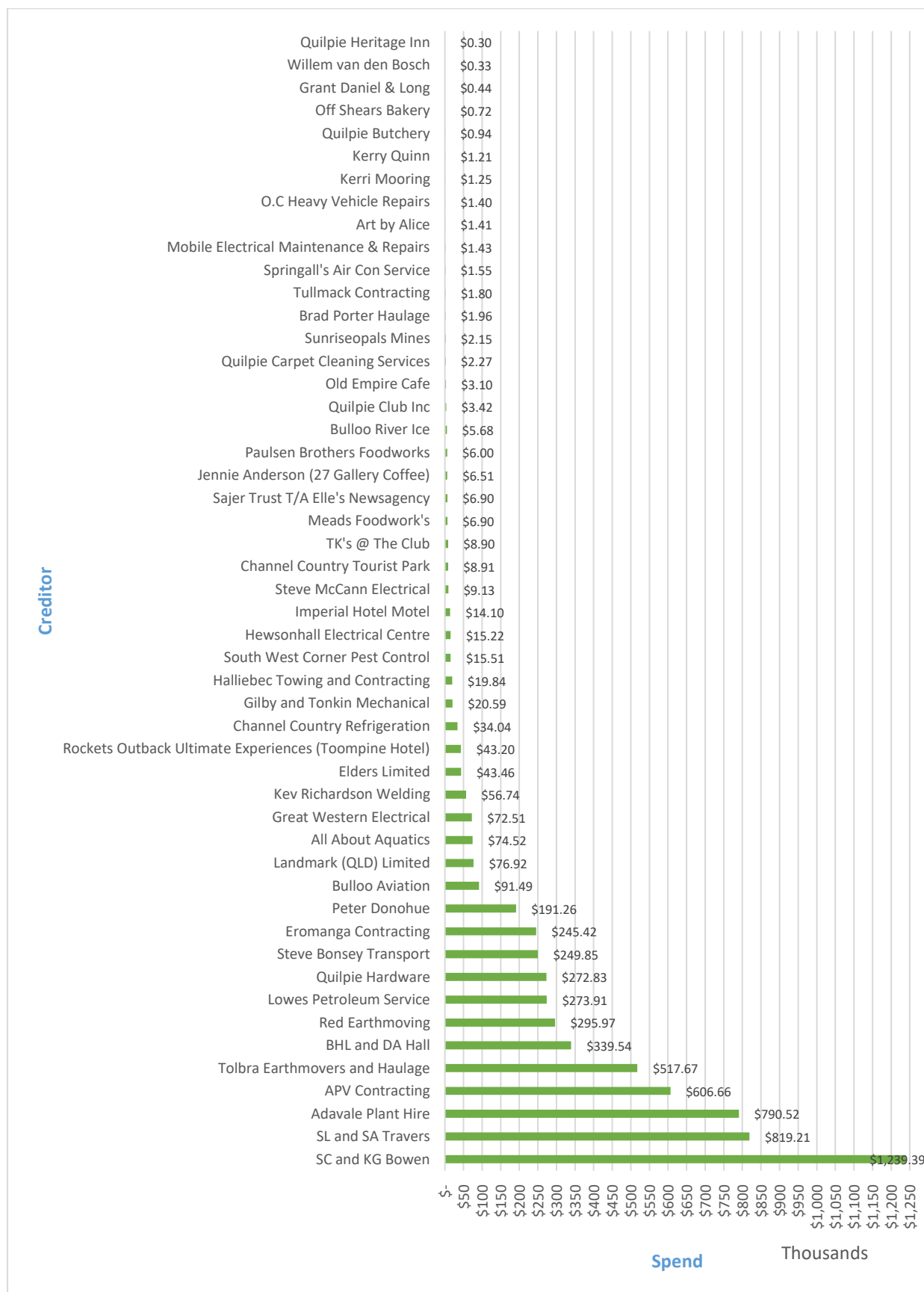
INVASIVE PEST CONTROL SCHEME



2020/21 CAPITAL WORKS PROGRAM



2019/20 LOCAL SUPPLIER EXPENDITURE



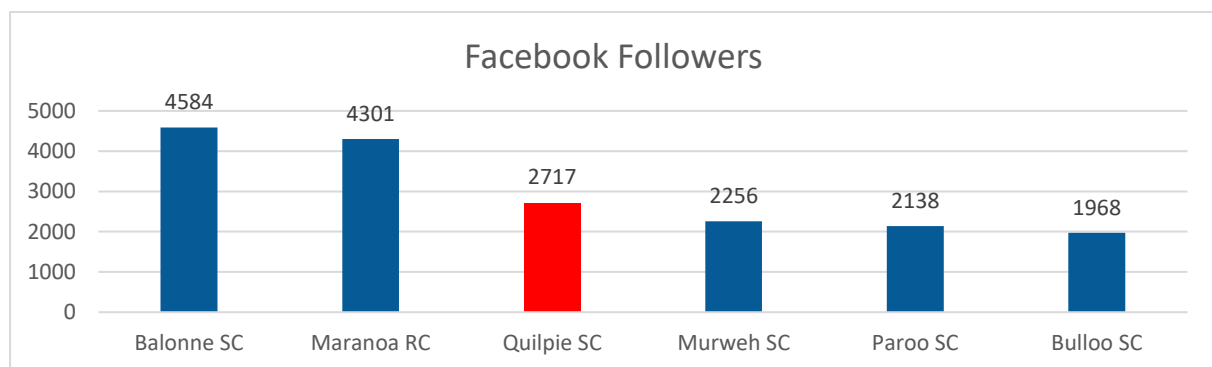
4.2 (07/20) – Governance and Communications Officer Operational Status Report

Author: Nina Burges

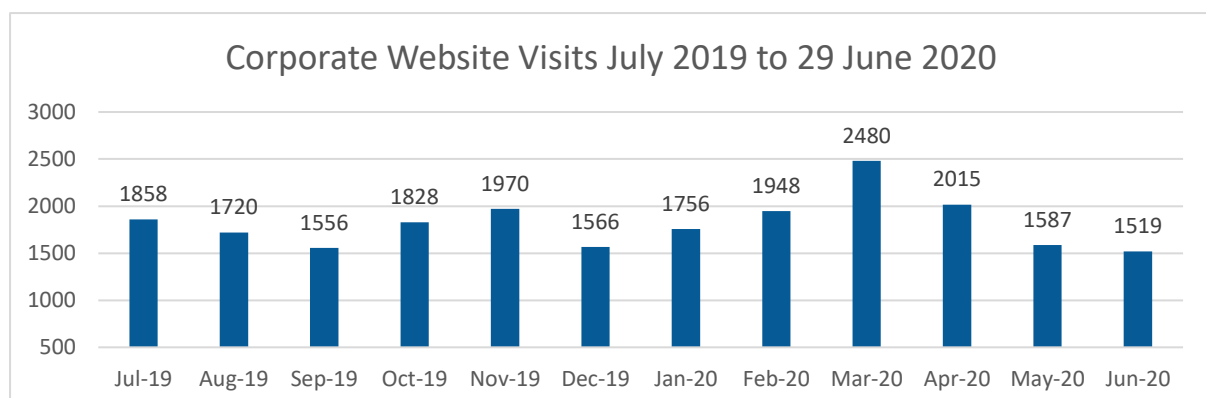
IX 197214

COMMUNICATIONS

As at 29 June 2020, Council's Corporate Facebook is at 2717 follows, an increase of 24 since 01 June. The following table shows comparative Councils online presence via Facebook:



The most popular Facebook post was the Council Reminder about Bulloo Park post from 23 June 2020. The Council Facebook page post reached just over 1,600 and had 88 'post clicks' including 48 reactions, comments and shares.



The next Community Newsletter and Staff Newsletters are due to be issued on Tuesday 14 July 2020.

UNEMPLOYMENT STATISTICS

At the April 2020 Ordinary Meeting of Council, the question was raised as to what comprises unemployment figures.

The unemployment rate is derived from the *ABS labour force survey* and Centrelink data and compiled by the Department of Employment. The unemployment rate is the proportion of the resident labour force (those in work or looking for work and aged over 15). The labour force does not include people who don't have a job but are not seeking a job.

Note: The Department of Employment advise that **highly disaggregated labour force and unemployment estimates at the LGA level can display significant variability and should be viewed with caution**. The figures are smoothed using a four-quarter (annual) average to minimise the variability inherent in small area estimates.

What is the Labour Force Survey?

The Labour Force Survey is a survey that around 26,000 households respond to each month; the equivalent of about 50,000 people – or around one in every 312 Australians aged 15 years and over. The target survey response rate of between 93%-95% is higher than that of all other OECD countries, which ensures that Australia has highly reliable information about its labour market.

NOTE: Estimates derived from the Labour Force Survey are based on information obtained from a sample of dwellings. Because the entire population is not sampled, the estimates are subject to sampling error. While the sample is designed to ensure that the sampling error is as low as possible at the national and state/territory level, it can be higher for labour force regions or for detailed population breakdowns. Further, the Department of Employment advise that the data should be viewed with caution at the local government area level.

How employment is measured: The one hour rule

Less than 50 people in the sample of 50,000 report they only work one hour. That works out to be 15,000 people out of around 12 million employed (or 0.1%) and movements in this number are not large enough to affect total employment.

The ABS defines people as 'employed' if they work one hour or more in the reference week. The vast majority of part-time employed people work more than 15 hours.

The 'one hour rule' is used internationally and allows employment figures to be compared with other countries. It has been used in Australia since the Labour Force Survey began, enabling comparisons to be made over a long period of time.

The attached table comprises data for quarterly unemployment and labour force statistics from December 2010. As can be seen, labour force numbers can vary quite significantly to estimated population. Centrelink data recording unemployed people (youth allowance or job seeker recipients) has, however, increased significantly since March 2016.

ATTACHMENT:

Historical employment figures

	Quilpie Shire				Regional QLD	Queensland				
	Unemployed people	Labour force	Unemployment rate %	Estimated Population	Unemployment rate %	Unemployment rate %		Unemployed change	Labour force change	population change
Average 2019	45.75	453.25	10.125	778	6.05	6.175		8.5	48.5	-12
December	43	476	9		6.2	6				
September	46	467	9.9		6.1	6.3				
June	49	445	11		6	6.3				
March	45	425	10.6		5.9	6.1				
Average 2018	37.25	404.75	9.2	790	6.075	6.15		1.75	-2	-29
December	41	408	10		6.1	6.1				
September	38	406	9.4		6.1	6.1				
June	32	400	8		6.1	6.2				
March	38	405	9.4		6	6.2				
Average 2017	35.5	406.75	8.7	819	6.275	6.075		-2.75	-42.75	-6
December	36	403	8.9		6.1	6				
September	33	396	8.3		6.1	5.9				
June	38	412	9.2		6.3	6.1				
March	35	416	8.4		6.6	6.3				
Average 2016	38.25	449.5	8.575	825	6.575	6.125		19.5	-129.5	-6
December	38	428	8.9		6.6	6.2				
September	43	444	9.7		6.5	6				
June	41	447	9.2		6.6	6.2				
March	31	479	6.5		6.6	6.1				
Average 2015	18.75	579	3.3	868	6.825	6.225		0	-18	-43
December	24	526	4.6		6.7	6				
September	18	568	3.2		7	6.2				
June	14	606	2.3		6.9	6.3				
March	19	616	3.1		6.7	6.4				
Average 2014	18.75	597	3.125	915	6.175	6.4		1.5	65	-29
December	22	609	3.6		6.5	6.6				
September	19	607	3.1		6.2	6.6				
June	18	601	3		6	6.3				
March	16	571	2.8		6	6.1				

Average 2013	17.25	532	3.225	944	6.025	5.825		-6.25	-47.5	-39
December	15	547	2.7		6	6				
September	16	531	3		6.1	5.8				
June	17	514	3.3		6.1	5.8				
March	21	536	3.9		5.9	5.7				
Average 2012	23.5	579.5	4.05	983	5.925	5.8		-12.5	2.25	-24
December	22	555	4		5.9	6				
September	24	571	4.2		5.9	6				
June	24	593	4		5.9	5.7				
March	24	599	4		6	5.5				
Average 2011	36	577.25	6.25	1007	5.9	5.475		-12	15.25	4
December	30	596	5		6	5.5				
September	34	584	5.8		6	5.5				
June	38	567	6.7		5.8	5.4				
March	42	562	7.5		5.8	5.5				
2010	48	562	8.5	1003	5.8	5.5				
December	48	562	8.5		5.8	5.5				

Source: Australian Bureau of Statistics, Labour force survey catalogue number 6202.0, and Department of Employment, Small Area Labour Markets. Compiled and presented in economy.id by the population experts. Please refer to specific data notes for more information

The unemployment rate shown here is the proportion of the resident labour force (those in work or looking for work and aged over 15) who are looking for work. Unemployment does not include people who don't have a job but are not seeking a job.

HR METRICS

Staff are currently reviewing the HR Metrics reporting data on matters such as staff turnover, employee profile etc.

Operational Status Report

Tourism Development

4.3 (07/20) – Tourism Development Officer Operational Status Report

Author: Karen Grimm

IX 197274

GENERAL INFORMATION

VIC and Museum reopening: The Visitor Information Centre and museums are now open seven days a week from Monday 29 June. The only Museums that are not currently open are Powerhouse Museum, Local History Museum and Eromanga Living History Centre. Staff are currently working with Queensland Museums to identify how they can reopen within COVID-19 guidelines.

COVID-19 Recovery Marketing plan: Television ads have aired since Tuesday 16th on the WIN network. This will initially be for a four week cycle. Currently investigating extension of this schedule into August. Currently liaising with Imparja about advertising within their network as borders open. Social Media has continued to be a main communication tool, with engagement continually increasing each month. This has provided some unique insight for future campaigns, brochures and experiences opportunities. Media releases have developed slowly, however we have had one television news article on digital connectivity.

Bloggers: Within the South West networking group we have been investigating the opportunity to partner with bloggers. These bloggers typically have a high following within their target audience on all platforms. In July we will be participating with other members on the Natural Sciences Loop to host a blogger. This blogger is audience families. They will be stopping in Eromanga for two nights hosted by the ENHM before moving onto Quilpie for two nights. Further work will be completed in this area to utilize bloggers more often to increase exposure.

Virtual Reality in VIC project: The filming of our virtual reality experiences has been completed. This footage will be used to develop the final experiences to use within the centre. This footage can also be shared within the VIC network to promote the experiences to people before they get to Quilpie Shire. These experiences will be in place for the 2021 season.

GALLERY PROGRAM 2020

We are hosting our first exhibition in the gallery opening Monday 6th July. This is the annual Cultural Society exhibition and will be on display until Friday 31st July.

SOCIAL MEDIA & WEBSITE

Facebook - Visit Quilpie Shire, data as at 28.6.2020

Page likes	June: 1984	May: 1867	Increase of 117 or 6%
Page followers	June: 2103	May: 1963	Increase of 140 or 7%
Total Posts (ours)	June: 29	May: 32	
Average Reach per posts from month	June: 3195	May: 1756	Increase of 1439 or 81%
Most popular post June (not paid for)	<i>Are you dreaming of a place.....-Video by Pete Murray promoting/inviting visitors to Quilpie Shire.</i>		
	Reach: 29,029 Shares: 45	Post clicks: 739 Comments: 30	Reactions: 351 (Likes 270)
Most popular post M (not paid for)	<i>We made a visit out to the Eromanga Natural History Museum to check out the new stage of construction. Looking amazing and we can't wait for the opening.</i>		
	Reach: 3067 Shares: 24	Post clicks: 307 Comments: 14	Reactions: 225 (Likes 188)
**Average Daily Total Reach:	June: 4410	May: 1652	Increase of 2758 or 166%
**The number of people who had any content from your Page or about your Page enter their screen. This includes posts, check-ins, ads, social information from people who interact with your Page and more. (Unique Users)			

FACEBOOK BOOSTED POST'S FOR JUNE – PAID

These paid posts are \$25 and target specific audiences. The paid campaign runs for 5 days

POST BOOSTED: Blog: What do high tea's and Hell Hole Gorge have in common? #Adavale

	TOTAL	BEFORE BOOST	EXTRA GAINED WITH BOOST
Link Clicks (to our website)	155	1	154
People reached	4785	812	3973
Shares	10	10	0
Comments	20	14	6

On the post we had 67 likes but thanks to the amount of shares this post had we got an extra 28 likes on the shares. 18 of the total comments were also on shares of this post.

POST BOOSTED: Blog: Accommodation options in Quilpie to suit every budget.

	TOTAL	BEFORE BOOST	EXTRA GAINED WITH BOOST
Link Clicks (to our website)	199	32	167
People reached	3880	732	3148
Shares	26	14	12
Comments	10	8	2

On the post we had 84 likes but thanks to the amount of shares this post had we got an extra 40 likes on the shares. 6 of the 10 comments were also on shares of this post.

Instagram – Visit Quilpie Shire, data as at 28.6.2020			
Page Followers	June: 777	May: 702	Increase of 75 or 10%
Most popular post June:	<i>Our latest blog is live on our website and is a travelling with kids guide to the Quilpie Shire. (Photo of Claire Tully holding yabbies')</i>		93 Likes 1 Comments
Most popular post April:	<i>We played hooky (don't tell the boss 😊) and hit the road for a day trip to 'the furthest town from the Sea', Eromanga!</i>		90 Likes 1 Comment
Posts per month	June: 26	May: 30	
Average likes per posts from month	June: 47	May: 43	Increase of 4

Website – visitquilpieshire.com (No information available for June at time of report)			
Sessions	May 2020: 2337	May 2019: 2454	April 2020: 1332
Blog posts on website	June: 4	May: 3	

VISITOR NUMBERS

- Numbers up until 26th June

	Jan	Feb	Mar	Apr	May	Jun	Jul	Aug	Sep	Oct	Nov	Dec	TOTAL
2010	190	124	134	460	992	1265	1633	1654	1761	454	216	208	9091
2011	56	87	294	336	855	1208	1372	1881	1654	801	314	386	9244
2012	88	108	258	837	1302	1181	1895	2002	2224	771	237	167	11070
2013	174	359	408	442	1019	1498	1879	1887	1618	451	115	53	9903
2014	100	112	209	556	1513	1616	1832	1564	1912	414	139	127	10094
2015	112	73	174	843	1425	1811	2152	1820	1935	531	213	75	11164
2016	60	83	187	629	1523	2685	2421	1970	1220	529	205	69	11581
2017	97	106	207	1842	1300	2114	2348	2048	1079	445	246	88	11920
2018	67	62	240	583	1416	1622	2610	2035	1229	408	259	124	10655
2019	89	62	194	443	1130	1712	2725	1440	1450	548	241	97	10131
2020	8	42	53	0	0	298							103

Operational Status Report

Workplace Health and Safety

4.4 (07/20) – Workplace Health and Safety Officer Operational Status Report

Author: Mike Castles

IX 197220

The following data is for the month of May 2020.

WORKPLACE HEALTH & SAFETY

Document reviews/WHS Management Plan updated.

Review & Update RMPC WHS Documents and Traffic Guidance Schemes

QUARTERLY ACTION PLANS (QAP'S)

QAP's – Q4 all completed by June 30.

WHS Consultation Group meetings not held due to COVID 19 restrictions

KEY PERFORMANCE INDICATORS (KPI'S):

Toolbox Talks – May

Crew	Completion Rate
Concrete	100%
Construction 1	100%
Construction 2	100%
Town Services	100%
Plumbers	100%
Workshop	100%

Take 5's – May

Group	Completion Rate
Governance	56%
Corporate, Community	52%
Financial Services	58%
Engineering & Technical Services	50%
Concrete	88%
Construction	100%
Sewerage & Water	50%
Town Services	73%
Workshop	92%

Incident Reporting – May

WHS Incidents	#
Personal Injury Reports:	0
Damage Reports:	3
Hazard Reports	0

Non Conformance

WHS	TMR Signage	TMR RMPC	TMR Construction
0	0	0	1

Workplace Rehabilitation 2019-20

Lost Time Injuries (LTI's)	May	Year to Date	# Claims Finalised
2020 Calendar Year	1	3	1
Total Days Lost	2	26	26

WHS Training - Nil

DAMP Testing		Number Tested		
	Results	Staff	Other	Total
DAMP Testing				

QUALITY ASSURANCE

Adavale Road Seal completed, working on section 51-54.350.

2020-21 Adavale Red Road Quality & Safety Plans submitted.

RMPC ongoing.

2020-21 RMPC Quality Plans submitted.

STATE EMERGENCY SERVICE

Active Members	Activations	Activation Attendance	Combined Activaton Hours	Combined Activity/Training Hours
16	Nil	0	122	16

No activities or training activities until notified due to COVID-19.

REHABILITATION AND RETURN TO WORK

Financial Year 2019-20

1 LTI (Lost Time Injuries) 2 Days Lost

3 YTD (year to date) 26 Days Lost – 65% reduction from 2018-19 Financial Year.

AERODROME SAFETY MANAGEMENT SYSTEM

Nil

INJURY INCIDENT REPORTS 2020

*Reported Incidents	Jan	Feb	Mar	Apr	May	Jun	Jul	Aug	Sept	Oct	Nov	Dec	Total																	
Total Incidents Reported	0	0	0	0	0	0	2	0	0	0	0	0	0																	
LTI Performance	July	August	Sept.	October	Nov.	Dec.	January	Feb.	April	April	May	June	Total																	
Lost Time Injury (LTI)	0	0	0	0	1	0	2	0	0	0	0	0	0																	
Days Lost	0	0	0	0	2	0	24	0	0	0	0	0	0																	
Reportable Injury WHSQ	0	0	0	0	0	0	0	0	0	0	0	0	0																	
*Duration Rate	0	0	0	0	0	0	0	0	0	0			4.51																	
**Frequency Rate	0	0	0	0	0	0	0	0	0	0																				
														2020	2019	2018	2017	2016-17	2015-16	2014-15	2013-14	2012-13	2011-12	2010-11	2009-10	2008-09	2007-08	2006-07	2005-06	2004-05
Number of Claims	3	1	2	1	1	4	4	3	3	5	2	1	2	2	1	2	4													
Actual Lost Time Injuries	3	1	2	0	1	4	2	2	2	4																				
Target (10% Reduction) Lost Time Injuries		0.9	1.8	3.24	3.6	1.80	1.80	1.80	3.6																					
Yearly LTI's (Days Lost)	26	40	1	0	7	126	41	89	123	27	29	76	2	0	13	10	43													
Target (10% Reduction) Days Lost		36	6.3	102.06	113.40	36.90	77.40	110.70	24.30	28.71																				
		2020	2019	2018	*2017	2015-16	2014-15	2013-14	2012-13	2011-12	Scheme Average Rate 2019				Member Group Average Rate 2019															

LTI Frequency Rate	26.63	8.08	8.14	8.94	32.80	16.52	16.03	25.77	35.78	3.42	3.54
Target (10% Reduction) LTI Frequency Rate	23.967	7.272	7.38	29.52	14.866	14.427	23.193	32.202			
Duration Rate	8.67	40.00	1.00	7.00	31.50	20.50	44.50	41.00	6.75	29.55	30.96
Target (10% Reduction) Duration Rate		36.00	6.3	28.35	18.45	40.05	36.90	6.6825			
Lost Time Incident Rate	4.51	1.49	1.50	1.52	6.06	3.05	2.96	4.76	6.61	2.54	2.59