



QUILPIE WELLSPRING

A NEW WAY TO
DELIVER LOCAL JOBS IN
OUTBACK QUEENSLAND

Quilpie Wellspring is a community driven
initiative showcasing enterprise, research and
education in rural and remote regional Australia.



EXECUTIVE SUMMARY

Quilpie Wellspring is a bold regional economic development initiative commissioned by Quilpie Shire Council in response to the challenge of remote regional economic development in Outback Queensland.

Quilpie Shire is located in South-West Queensland, approximately 1,000 km west of Brisbane and has a population of 790, of which 654 reside in the town of Quilpie.

Inspired by Quilpie's existing tourism and lifestyle image as an oasis in the arid outback landscape, the theme of water and its smart use in the Outback was adopted as the focus for new ideas attract local business and employment.

Using a best practice approach to sustainable development and circular economy principles, Quilpie Wellspring provides a vision for new micro enterprises clustered on a 3.9 ha site in the heart of Quilpie. The mixed-use precinct is planned as a five-stage project with stage one being three new enterprises providing solar distilled water from the Great Artesian Basin, local craft beer and fresh aquaponics produce of local fish and vegetables with supporting arid food forest, ecological lagoon and public open space.

The employment and family flow on effects are anticipated to deliver 37 new residents to the township of Quilpie potentially reducing projected population decline by 25%.

A key goal of the project is to provide skills and training opportunities, university partnerships and transferable learnings for other rural and remote communities to increase employment, skills, health and wellbeing. The project vision is that Quilpie Wellspring will provide a hub for rural and remote communities to learn and share the latest micro enterprise thinking and technology through practical application specifically tailored for Outback Australia.

Council is currently undertaking a business case and investigating new financial and governance structures to advance this innovative Outback project and will be actively seeking government and corporate partners for the capital funding of stage one in 2020.



WHERE IS QUILPIE?

QUILPIE TO BRISBANE

- 10 HOURS, 40 MIN
- 953.9kms

QUILPIE TO LONGREACH

- 6 HOURS, 0 MIN
- 550.4 kms

QUILPIE TO BIRDSVILLE

- 7 HOURS, 3 MIN
- 625.9kms



QUILPIE TO DUBBO, NSW

- 9 HOURS, 59 MIN
- 929.7 kms

QUILPIE TO ROCKHAMPTON

- 10 HOURS, 12 MIN
- 957.4 kms

QUILPIE TO MOUNT ISA

- 12 HOURS, 43 MIN
- 1,196.1 kms



WHY

INCREASE LOCAL EMPLOYMENT

- Attract sustainable jobs
- Strengthen local lifestyle
- Enhance regional tourism





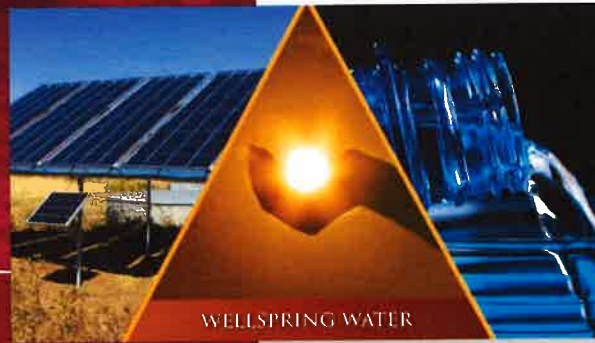
HOW

A CLUSTER OF CONNECTED ACTIVITIES

- Provide a network of new local business opportunities
- Incorporate best practice circular economy principles
- Partner with government, corporates and institutions

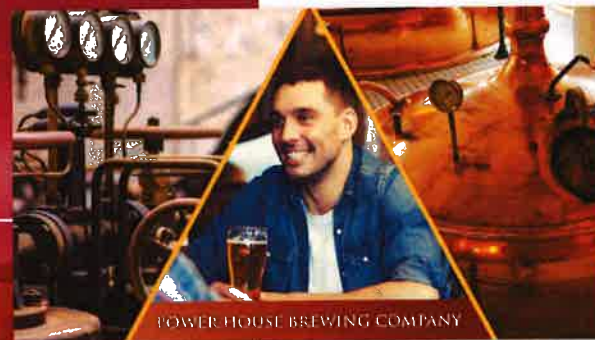


SOLAR
DISTILLATION



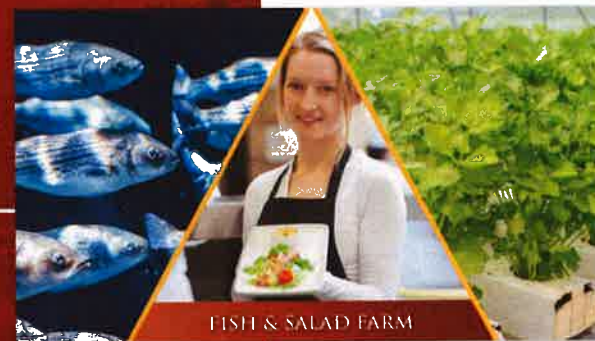
WELLSPRING WATER

CRAFT
BREWERY



POWERHOUSE BREWING COMPANY

AQUAPONICS



FISH & SALAD FARM



Quilpie Wellspring is an advanced manufacturing micro precinct promoting new business, employment, training and regional tourism.



A CLUSTER OF NETWORK ENTERPRISES

FOUNDATION ENTERPRISES



WELLSPRING WATER

- Pure Water
- Solar Distilled
- Catalyst Product



POWER HOUSE BREWING CO.

- Pure Water
- Niche Product
- Industry Training



FISH & SALAD FARM

- Healthy food
- Signature Meal
- Industry Training

ECO FRIENDLY ENTERPRISES



QUILPIE POTAGER

- Local Production
- Chemical Free
- Nutrient Loops



BULLOO BILLABONG

- River Water
- Sealed System
- Riverine Ecology



QUILPIE SMOKEHOUSE

- Non Perishable
- Local Flavours
- Mixed Products

COMMERCIAL ENTERPRISES



OPAL ARTISANS

- Shared Knowledge
- Lead Jeweller
- Unique Value



OUTBACK ESCAPE

- Learning Centre
- Enterprise Gallery
- Visitor Accommodation



IT & MEDIA SERVICES

- Technology support
- Current Skills
- Local Service

INNOVATION ENTERPRISES



THE BIG SHED

- Machinery Heritage
- Restoration Skills
- Creative Fabrication



BULLOO BREAK

- River Access
- Tourist Destination
- Enhanced habitat



WELLSPRING SYSTEMS

- Knowledge Hub
- Network Management
- Training & Skills



SITE MAP



STAGE ONE		Public Open Space		Aquaponics	STAGE TWO		Streetscape		Big Shed	STAGE THREE		Learning Centre, Cafe & Gallery	STAGE FOUR		Accommodation Admin plus 20 rooms	STAGE FIVE		Accommodation Extra 20 rooms
		Arid Food Forest		Brewhouse			Parking		Jewellery Workshop									
		Solar Distillation & Storage Area		Lagoon			Habitat Enhancement		River Parkway									



QUILPIE
WELLSPRING



QUILPIE WELLSPRING

ARTIST'S IMPRESSION

July 2019



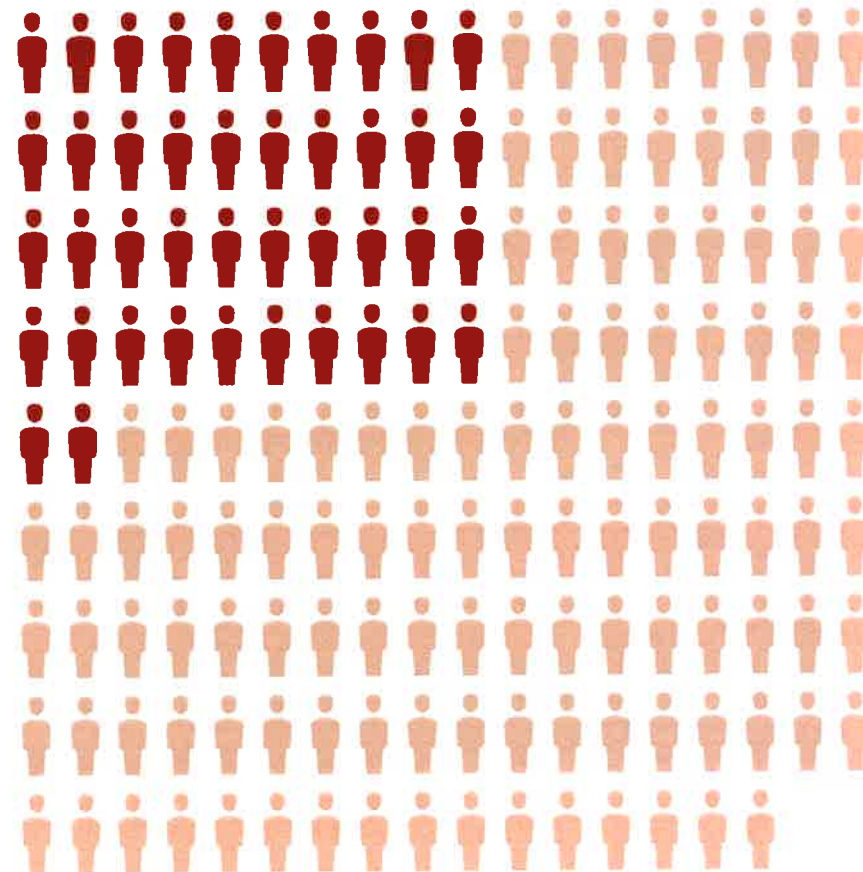


By 2026
158 people
will leave Quilpie

Quilpie Wellspring will
reduce this by **25%**

27 new jobs (16 direct & 11 indirect)
= **37 new residents** (Lucid Economics)

...and provide **\$4.1 million**
in Gross Regional Product





QUILPIE
WELLSPRING



QUILPIE
Shire

PROJECT STAGES

The project is planned to be delivered in the following stages:

STAGE ONE

SOLAR DISTILLATION

WATER STORAGE

ECOLOGICAL LAGOON

BREWHOUSE & TAP ROOM

AQUAPONICS

ARID FOOD FOREST

\$9 million

STAGE TWO

OPAL WORKSHOP

RIVER PARKWAY

RIVERINE HABITAT
ENHANCEMENT

BIG SHED ACTIVATION

\$6 million

STAGE THREE

LEARNING CENTRE:
ENTERPRISE TRAINING
& RESEARCH SUPPORT

ENTERPRISE CAFÉ

ARTISAN GALLERY

\$6 million

STAGE FOUR

PUBLIC PRIVATE
PARTNERSHIP

VISITOR, DELEGATE
AND TRAINEE
ACCOMMODATION

ADMIN PLUS 20 ROOMS

\$6 million

STAGE FIVE

PUBLIC PRIVATE
PARTNERSHIP

VISITOR, DELEGATE
AND TRAINEE
ACCOMMODATION

PLUS 20 ROOMS

\$5 million



QUILPIE
WELLSPRING



POPULATION:

Quilpie Shire

790

Quilpie Town

654

COMMUNITY SUPPORT

On 24th November 2018 the 'Big Idea' of Quilpie Wellspring was presented to 97 shire residents at the Bowls Club.

On the following Monday, the same presentation was given to Council staff at the new depot.

After these two events, Quilpie Wellspring had been presented to 139 shire residents representing 21% of the town's residents and 17% of Quilpie Shire's population.

OCTOBER 2017



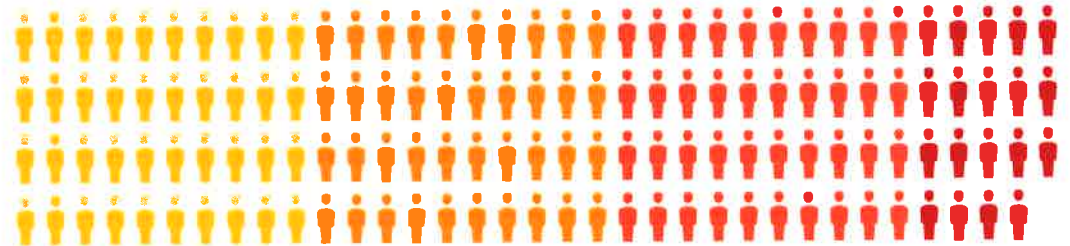
6 people turned up to provide ideas

DURING 2018



Quilpie Wellspring was developed with local leaders

NOVEMBER 2018



139 residents turned up to hear about the idea and provided **unanimous support**



COLLABORATIVE PARTNERS

- Climate KIC Australia
- UQ Integrated Bio Economy Project

STRATEGIC ADVISORS

- Office of Queensland Entrepreneur
- QLD Independent Brewers Association
- Australian Aquaponics Practitioners
- USQ Rural Economies Centre of Excellence
- Department of Environment & Science: Sustainable Futures
- Department of State Development, Manufacturing, Industry & Planning
- Department of Agriculture & Fisheries
- QMI Solutions: Workforce Skills Development
- Toowoomba Surat Basin Enterprise
- Darling Downs & South West RDA
- Sustainable Economic Growth for Regional Australia

CONTACT



QUILPIE SHIRE

Chief Executive Officer

PO Box 57, Quilpie Qld 4480

Phone: (07) 4656 0500

Email: admin@quilpie.qld.gov.au



QUILPIE
WELLSPRING

QUILPIE WELLSPRING

IMPACT Project Coordinator
Robert Prestipino

Mobile 0414 550 975

Email: robert@vitalplaces.com.au